

**PLEASE CHECK WWW.MOLEX.COM FOR LATEST PART INFORMATION**

**Part Number:** [0009070037](#)  
**Status:** **Active**  
**Overview:** [kk](#)  
**Description:** 3.96mm (.156") KK® IDT Double Cantilever Contact, 3 Circuits, Tin (Sn), Feed-Through, 18 Solid or Fused Stranded, Yellow ID Strip

**Documents:**

[3D Model](#) [Product Specification PS-7660 \(PDF\)](#)  
[Drawing \(PDF\)](#) [RoHS Certificate of Compliance \(PDF\)](#)

**Agency Certification**

UL E29179

**General**

Product Family IDT and Solder Connectors  
 Series [7675](#)  
 Comments Double Cantilever contact  
 Crimp Quality Equipment Yes  
 Overview [kk](#)  
 Product Name KK®

**Physical**

Circuits (Loaded) 3  
 Color - Resin Natural  
 Flammability 94V-2  
 Gender Female  
 Glow-Wire Compliant No  
 Lock to Mating Part None  
 Material - Metal Brass  
 Material - Resin Nylon  
 Number of Rows 1  
 Packaging Type Bag  
 Panel Mount No  
 Pitch - Mating Interface (in) 0.156 In  
 Pitch - Mating Interface (mm) 3.96 mm  
 Temperature Range - Operating 0°C to +75°C  
 Termination Interface: Style IDT or Pierce  
 Wire Size AWG 18 Solid, 18 Stranded Topcoat

**Electrical**

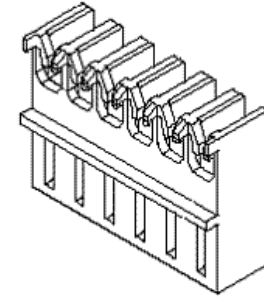
Voltage - Maximum 250V

**Material Info**

Old Part Number A-7675-A03A

**Reference - Drawing Numbers**

Packaging Specification PK-7674-001  
 Product Specification PS-7660  
 Sales Drawing SDA-7675-\*\*\*\*



*Series  
image - Reference only*

**EU RoHS**

**ELV and RoHS  
Compliant**  
**REACH SVHC  
Contains SVHC: No  
Halogen-Free  
Status**

**China RoHS**



**Need more information on product  
environmental compliance?**

Email [productcompliance@molex.com](mailto:productcompliance@molex.com)  
 For a multiple part number RoHS Certificate of Compliance, [click here](#)

Please visit the [Contact Us](#) section for any non-product compliance questions.

**Search Parts in this Series**

[7675Series](#)

**Application Tooling | [FAQ](#)**

*Tooling specifications and manuals are found by selecting the products below. Crimp Height Specifications are then contained in the Application Tooling Specification document.*

**Global**

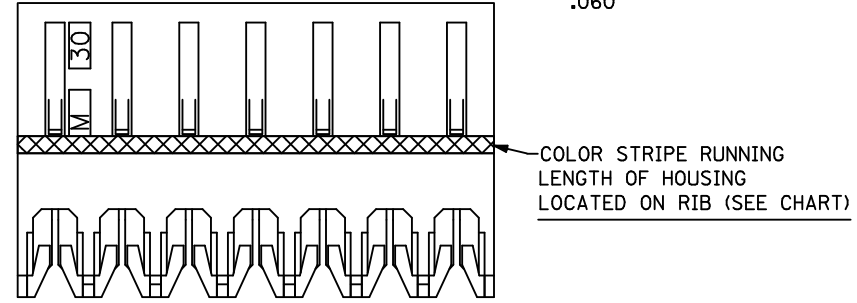
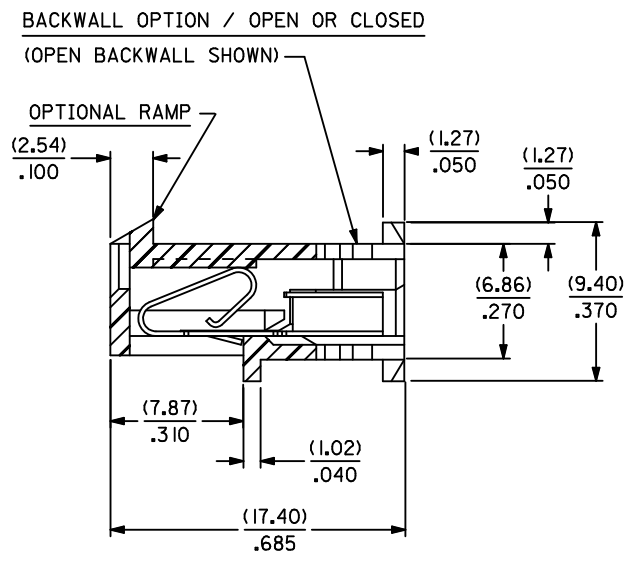
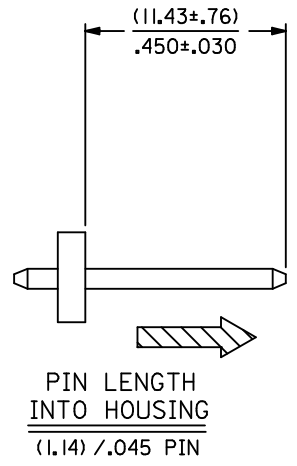
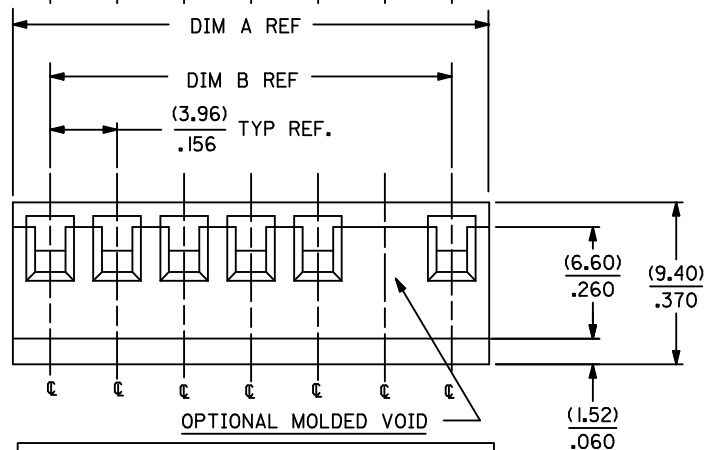
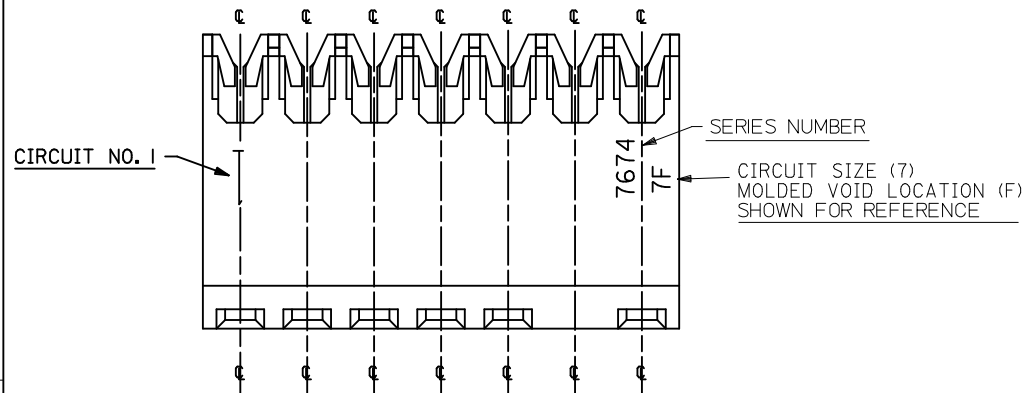
| Description                                                     | Product #                                                |
|-----------------------------------------------------------------|----------------------------------------------------------|
| Insertion Tool for 3.96mm (.156") Pitch KK® IDT Crimp Terminals | <a href="#">0638133503</a>                               |
| IDT - Manual Press For Ribbon Cable                             | <a href="#">0011200314</a>                               |
| IDT - Semi-automatic - Bench-Top Terminator                     | <a href="#">0011200418</a>                               |
| IDT - Manual Handtool                                           | <a href="#">0011215196</a>                               |
| IDT Manual Handtool Arbor Press Fixture                         | <a href="#">0621000400</a><br><a href="#">0690200770</a> |

This document was generated on 05/27/2010

**PLEASE CHECK [WWW.MOLEX.COM](http://WWW.MOLEX.COM) FOR LATEST PART INFORMATION**

**NOTES:**

1. MATERIAL: HOUSING - NYLON 6/6, UL94V-2, COLOR: NATURAL  
TERMINALS - BRASS, (0.28)/.011 THICK
2. FINISH: SEE SHEET 2
3. PRODUCT SPECIFICATION: PS-7660
4. PACKAGING: ALL PARTS ARE TO BE BULK PACKED PER PK-7674-001 UNLESS OTHERWISE SPECIFIED IN CHART.
5. CHAIN CUTOFF: "A" DIMENSION PLUS (0.25)/.010.
6. EACH CIRCUIT MUST HAVE A MINIMUM OF 0.50 POUNDS RETENTION WHEN CHECKED WITH A TIN PLATED [(102) PLT.] (1.14)/.045 SQUARE BRASS PIN, AND A TIN PLATED [(102) PLT.] TERMINAL ONLY.
7. THIS PART CONFORMS TO CLASS B REQUIREMENTS OF COSMETIC SPECIFICATION PS-45499-002.



ADD P/N 50-36-1618  
 EC NO: UCP2010-0214  
 DRWN:MKIPPER 2009/11/05  
 CHKD:SSOUSEK 2009/12/16  
 APPR:FSM:TH 2009/12/17

| QUALITY SYMBOLS | DESCRIPTION |
|-----------------|-------------|
| ▼=0             |             |
| ∇=0             |             |

| GENERAL TOLERANCES (UNLESS SPECIFIED)                |        |        |
|------------------------------------------------------|--------|--------|
|                                                      | mm     | INCH   |
| 4 PLACES                                             | ± ---  | ± ---  |
| 3 PLACES                                             | ± ---  | ± .015 |
| 2 PLACES                                             | ± 0.36 | ± .010 |
| 1 PLACE                                              | ± 0.25 | ± ---  |
| ANGULAR ±1/2°                                        |        |        |
| DRAFT WHERE APPLICABLE MUST REMAIN WITHIN DIMENSIONS |        |        |

| DIMENSION STYLE |            |
|-----------------|------------|
| MM/IN           |            |
| DRAWN BY        | DATE       |
| CHECKED BY      | DATE       |
| APPROVED BY     | DATE       |
| WRL             | 1986/02/14 |
| MATERIAL NO.    |            |
| SEE CHART       |            |


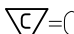

|                                                                                                                               |                   |                        |
|-------------------------------------------------------------------------------------------------------------------------------|-------------------|------------------------|
| SCALE ---                                                                                                                     | DESIGN UNITS INCH | THIRD ANGLE PROJECTION |
| TITLE                                                                                                                         |                   |                        |
| CONNECTOR ASSEMBLY<br>KK (3.96)/.156 CENTER<br>INSULATION DISPLACEMENT                                                        |                   |                        |
| molex MOLEX INCORPORATED                                                                                                      |                   |                        |
| MATERIAL NO.                                                                                                                  | DOCUMENT NO.      | SHEET NO.              |
| SEE CHART                                                                                                                     | SDA-7675-****     | 1 OF *                 |
| THIS DRAWING CONTAINS INFORMATION THAT IS PROPRIETARY TO MOLEX INCORPORATED AND SHOULD NOT BE USED WITHOUT WRITTEN PERMISSION |                   |                        |

| CIRCUIT SIZE | DIM. "A"         | DIM. "B"         | CIRCUIT SIZE | DIM. "A"         | DIM. "B"         |
|--------------|------------------|------------------|--------------|------------------|------------------|
| 2            | (8.38)<br>.330   | (3.96)<br>.156   | 13           | (51.97)<br>2.046 | (47.55)<br>1.872 |
| 3            | (12.34)<br>.486  | (7.92)<br>.312   | 14           | (55.93)<br>2.202 | (51.51)<br>2.028 |
| 4            | (16.31)<br>.642  | (11.89)<br>.468  | 15           | (59.89)<br>2.358 | (55.47)<br>2.184 |
| 5            | (20.27)<br>.798  | (15.85)<br>.624  | 16           | (63.86)<br>2.514 | (59.44)<br>2.340 |
| 6            | (24.23)<br>.954  | (19.81)<br>.780  | 17           | (67.82)<br>2.670 | (63.40)<br>2.496 |
| 7            | (28.19)<br>1.110 | (23.77)<br>.936  | 18           | (71.78)<br>2.826 | (67.36)<br>2.652 |
| 8            | (32.16)<br>1.266 | (27.74)<br>1.092 | 19           | (75.74)<br>2.982 | (71.32)<br>2.808 |
| 9            | (36.12)<br>1.422 | (31.70)<br>1.248 | 20           | (79.71)<br>3.138 | (75.29)<br>2.964 |
| 10           | (40.08)<br>1.578 | (35.66)<br>1.404 | 21           | (83.67)<br>3.294 | (79.25)<br>3.120 |
| 11           | (44.04)<br>1.734 | (39.62)<br>1.560 | 22           | (87.63)<br>3.450 | (83.21)<br>3.276 |
| 12           | (48.00)<br>1.890 | (43.59)<br>1.716 | 23           | (91.59)<br>3.606 | (87.17)<br>3.432 |
|              |                  |                  | 24           | (95.55)<br>3.762 | (91.14)<br>3.588 |

| COLOR IDENTIFICATION |        | TYPE OF WIRE TERMINATED<br>(ALL WIRES HAVE A MAXIMUM<br>INSULATION DIAMETER OF<br>(2.41) / .095) |
|----------------------|--------|--------------------------------------------------------------------------------------------------|
| ASSEMBLY SUFFIX NO.  | COLOR  |                                                                                                  |
| -*NA*                | YELLOW | *18 GA. SOLID OR<br>FUSED STRANDED                                                               |
| -*NM*                | RED    | *20 GA. SOLID OR FUSED<br>STRANDED & *18 GA. STRANDED                                            |
| -*NL*                | BLUE   | *20 GA. STRANDED WIRE                                                                            |
| -*ND*                | GREEN  | *26 & *27 GA. STRANDED, FUSED<br>STRANDED & SOLID WIRE OR<br>*24 GA. STRANDED WIRE               |
| -*NJ*                | BLACK  | *24 & *22 GA. SOLID OR FUSED                                                                     |

TERMINAL FINISH:

- (102) OVERALL BRIGHT TIN: 0.00508/.000200 MIN. OVER  
COPPER: 0.00254/.000100 MIN.
- (154) OVERALL BRIGHT TIN: 0.00254/.000100 MIN. OVER  
NICKEL: 0.00127/.000050 MIN.
- (224) OVERALL MATTE TIN: 0.00508/.000200 MIN. OVER  
NICKEL: 0.00127/.000050 MIN.
- (208) SELECT GOLD: 0.00038/.000015 MIN.  
SELECT MATTE TIN: 0.00254/.000100 MIN.  
WITH OVERALL NICKEL UNDERPLATE: 0.00127/.000050 MIN.
- (502) OVERALL GOLD: 0.00051/.000020 MIN.  
WITH OVERALL NICKEL UNDERPLATE: 0.00127/.000050 MIN.
- (503) OVERALL GOLD: 0.00076/.000030 MIN.  
WITH OVERALL NICKEL UNDERPLATE: 0.00127/.000050 MIN.
- (555) SELECT GOLD: 0.00038/.000015 MIN.  
WITH OVERALL NICKEL UNDERPLATE: 0.00076/.000030 MIN.
- (562) SELECT GOLD: 0.00051/.000020 MIN.  
WITH OVERALL NICKEL UNDERPLATE: 0.00076/.000030 MIN.
- (565) SELECT GOLD: 0.00051/.000020 MIN.  
OVERALL GOLD FLASH: 0.00005/.000002 MIN.  
WITH OVERALL NICKEL UNDERPLATE: 0.00076/.000030 MIN.

|                                                                                                                                      |                                                                                                                                                                                  |                                                            |              |                          |            |                                                                                                                                                         |                      |                        |  |  |
|--------------------------------------------------------------------------------------------------------------------------------------|----------------------------------------------------------------------------------------------------------------------------------------------------------------------------------|------------------------------------------------------------|--------------|--------------------------|------------|---------------------------------------------------------------------------------------------------------------------------------------------------------|----------------------|------------------------|--|--|
| ADD 224 FINISH<br>EC NO: UCP2010-0214<br>DRWN:MKIPPER 2009/11/05<br>CHKD:SSOUSEK 2009/12/16<br>APPR:FSM:TH 2009/12/17<br>DESCRIPTION | QUALITY SYMBOLS                                                                                                                                                                  | GENERAL TOLERANCES (UNLESS SPECIFIED)                      |              | DIMENSION STYLE<br>MM/IN |            | SCALE<br>---                                                                                                                                            | DESIGN UNITS<br>INCH | THIRD ANGLE PROJECTION |  |  |
|                                                                                                                                      |  =0<br> =0 | mm                                                         | INCH         | DRAWN BY                 | DATE       | TITLE<br>CONNECTOR ASSEMBLY<br>KK (3.96)/.156 CENTER<br>INSULATION DISPLACEMENT                                                                         |                      |                        |  |  |
|                                                                                                                                      |                                                                                                                                                                                  | 4 PLACES ± ---                                             | ± ---        | CHECKED BY               | DATE       |                                                                                                                                                         |                      |                        |  |  |
|                                                                                                                                      | DRAFT WHERE APPLICABLE<br>MUST REMAIN<br>WITHIN DIMENSIONS                                                                                                                       | 3 PLACES ± ---                                             | ± .015       | APPROVED BY              |            |  MOLEX INCORPORATED<br>DOCUMENT NO. SDA-7675-**** SHEET NO. 2 OF * |                      |                        |  |  |
| 2 PLACES ± 0.36                                                                                                                      |                                                                                                                                                                                  | ± .01                                                      | DATE         |                          |            |                                                                                                                                                         |                      |                        |  |  |
|                                                                                                                                      | 1 PLACE ± 0.25                                                                                                                                                                   | ± ---                                                      | WRL          |                          | 1986/02/14 |                                                                                                                                                         |                      |                        |  |  |
|                                                                                                                                      | ANGULAR ±1/2°                                                                                                                                                                    |                                                            | MATERIAL NO. |                          | SEE CHART  |                                                                                                                                                         |                      |                        |  |  |
| AZ3                                                                                                                                  | REV                                                                                                                                                                              | DRAFT WHERE APPLICABLE<br>MUST REMAIN<br>WITHIN DIMENSIONS |              | SIZE<br>A                |            | THIS DRAWING CONTAINS INFORMATION THAT IS PROPRIETARY TO MOLEX<br>INCORPORATED AND SHOULD NOT BE USED WITHOUT WRITTEN PERMISSION                        |                      |                        |  |  |

| A-7675-ANA       |              | A-7675-BNA       |              | A-7675-CNA       |              | A-7675-DNA               |              |
|------------------|--------------|------------------|--------------|------------------|--------------|--------------------------|--------------|
| HOUSING          | 7674-AN      | HOUSING          | 7674-BN      | HOUSING          | 7674-CN      | HOUSING                  | 7674-DN      |
| TERM. NO         | 40591-A(224) | TERM. NO         | 40591-A(224) | TERM. NO         | 40591-A(224) | TERM. NO                 | 40591-A(224) |
| BACKWALL:        | NO           | BACKWALL:        | NO           | BACKWALL:        | YES          | BACKWALL:                | YES          |
| RAMP             | NO           | RAMP             | YES          | RAMP             | NO           | RAMP                     | YES          |
| MOLD VOID IN CKT | NONE         | MOLD VOID IN CKT | NONE         | MOLD VOID IN CKT | NONE         | MOLD VOID IN CKT         | NONE         |
| VOID TERM.IN CKT | NONE         | VOID TERM.IN CKT | NONE         | VOID TERM.IN CKT | NONE         | VOID TERM.IN CKT         | NONE         |
| MATL NO          | ENG NO:      | MATL NO          | ENG NO:      | MATL NO          | ENG NO:      | MATL NO                  | ENG NO:      |
| 09-07-0027       | A-7675-A02A  | 09-06-0027       | A-7675-B02A  | 09-07-0028       | A-7675-C02A  | 09-06-0028               | A-7675-D02A  |
| 09-07-0037       | A-7675-A03A  | 09-06-0037       | A-7675-B03A  | 09-07-0038       | A-7675-C03A  | 09-06-0038               | A-7675-D03A  |
| 09-07-0047       | A-7675-A04A  | 09-06-0047       | A-7675-B04A  | 09-07-0048       | A-7675-C04A  | 09-06-0048               | A-7675-D04A  |
| 09-07-0057       | A-7675-A05A  | 09-06-0057       | A-7675-B05A  | 09-07-0058       | A-7675-C05A  | 09-06-0058<br>50-36-1618 | A-7675-D05A  |
| 09-07-0067       | A-7675-A06A  | 09-06-0067       | A-7675-B06A  | 09-07-0068       | A-7675-C06A  | 09-06-0068               | A-7675-D06A  |
| 09-07-0077       | A-7675-A07A  | 09-06-0077       | A-7675-B07A  | 09-07-0078       | A-7675-C07A  | 09-06-0078               | A-7675-D07A  |
| 09-07-0087       | A-7675-A08A  | 09-06-0087       | A-7675-B08A  | 09-07-0088       | A-7675-C08A  | 09-06-0088               | A-7675-D08A  |
| 09-07-0097       | A-7675-A09A  | 09-06-0097       | A-7675-B09A  | 09-07-0098       | A-7675-C09A  | 09-06-0098               | A-7675-D09A  |
| 09-07-0107       | A-7675-A10A  | 09-06-0107       | A-7675-B10A  | 09-07-0108       | A-7675-C10A  | 09-06-0108               | A-7675-D10A  |
| 09-07-0117       | A-7675-A11A  | 09-06-0117       | A-7675-B11A  | 09-07-0118       | A-7675-C11A  | 09-06-0118               | A-7675-D11A  |
| 09-07-0127       | A-7675-A12A  | 09-06-0127       | A-7675-B12A  | 09-07-0128       | A-7675-C12A  | 09-06-0128               | A-7675-D12A  |
| 09-07-0137       | A-7675-A13A  | 09-06-0137       | A-7675-B13A  | 09-07-0138       | A-7675-C13A  | 09-06-0138               | A-7675-D13A  |
| 09-07-0147       | A-7675-A14A  | 09-06-0147       | A-7675-B14A  | 09-07-0148       | A-7675-C14A  | 09-06-0148               | A-7675-D14A  |
| 09-07-0157       | A-7675-A15A  | 09-06-0157       | A-7675-B15A  | 09-07-0158       | A-7675-C15A  | 09-06-0158               | A-7675-D15A  |
| 09-07-0167       | A-7675-A16A  | 09-06-0167       | A-7675-B16A  | 09-07-0168       | A-7675-C16A  | 09-06-0168               | A-7675-D16A  |
| 09-07-0177       | A-7675-A17A  | 09-06-0177       | A-7675-B17A  | 09-07-0178       | A-7675-C17A  | 09-06-0178               | A-7675-D17A  |
| 09-07-0187       | A-7675-A18A  | 09-06-0187       | A-7675-B18A  | 09-07-0188       | A-7675-C18A  | 09-06-0188               | A-7675-D18A  |
| 09-07-0197       | A-7675-A19A  | 09-06-0197       | A-7675-B19A  | 09-07-0198       | A-7675-C19A  | 09-06-0198               | A-7675-D19A  |
| 09-07-0207       | A-7675-A20A  | 09-06-0207       | A-7675-B20A  | 09-07-0208       | A-7675-C20A  | 09-06-0208               | A-7675-D20A  |
| 09-07-0217       | A-7675-A21A  | 09-06-0217       | A-7675-B21A  | 09-07-0218       | A-7675-C21A  | 09-06-0218               | A-7675-D21A  |
| 09-07-0227       | A-7675-A22A  | 09-06-0227       | A-7675-B22A  | 09-07-0228       | A-7675-C22A  | 09-06-0228               | A-7675-D22A  |
| 09-07-0237       | A-7675-A23A  | 09-06-0237       | A-7675-B23A  | 09-07-0238       | A-7675-C23A  | 09-06-0238               | A-7675-D23A  |
| 09-07-0247       | A-7675-A24A  | 09-06-0247       | A-7675-B24A  | 09-07-0248       | A-7675-C24A  | 09-06-0248               | A-7675-D24A  |

|                                          |                                                                                |                                                                                           |                               |
|------------------------------------------|--------------------------------------------------------------------------------|-------------------------------------------------------------------------------------------|-------------------------------|
| REVISION:<br><b>AZ3</b>                  | ECR/ECN INFORMATION:<br>EC No.: <b>UCP2010-0214</b><br>DATE: <b>12/17/2009</b> | TITLE:<br><b>CONNECTOR ASSEMBLY<br/>KK (3.96)/.156 CENTER<br/>INSULATION DISPLACEMENT</b> | SHEET No.<br><b>3</b>         |
| DOCUMENT NUMBER:<br><b>SDA-7675-****</b> | CREATED / REVISED BY:<br><b>MKIPPER</b>                                        | CHECKED BY:<br><b>SSOUSEK</b>                                                             | APPROVED BY:<br><b>FSMITH</b> |

| A-7675-ANAA      |              | A-7675-BNAA      |              | A-7675-CNAA      |              | A-7675-DNAA      |              |
|------------------|--------------|------------------|--------------|------------------|--------------|------------------|--------------|
| HOUSING          | 7674-ANAA    | HOUSING          | 7674-BNAA    | HOUSING          | 7674-CNAA    | HOUSING          | 7674-DNAA    |
| TERM. NO         | 40591-A(502) | TERM. NO         | 40591-A(502) | TERM. NO         | 40591-A(502) | TERM. NO         | 40591-A(502) |
| BACKWALL:        | NO           | BACKWALL:        | NO           | BACKWALL:        | YES          | BACKWALL:        | YES          |
| RAMP             | NO           | RAMP             | YES          | RAMP             | NO           | RAMP             | YES          |
| MOLD VOID IN CKT | NONE         | MOLD VOID IN CKT | NONE         | MOLD VOID IN CKT | NONE         | MOLD VOID IN CKT | NONE         |
| VOID TERM.IN CKT | NONE         | VOID TERM.IN CKT | NONE         | VOID TERM.IN CKT | NONE         | VOID TERM.IN CKT | NONE         |
| MATL NO          | ENG NO:      | MATL NO          | ENG NO:      | MATL NO          | ENG NO:      | MATL NO          | ENG NO:      |
|                  | A-7675-A02AA |                  | A-7675-B02AA |                  | A-7675-C02AA |                  | A-7675-D02AA |
|                  | A-7675-A03AA |                  | A-7675-B03AA |                  | A-7675-C03AA |                  | A-7675-D03AA |
|                  | A-7675-A04AA |                  | A-7675-B04AA |                  | A-7675-C04AA |                  | A-7675-D04AA |
|                  | A-7675-A05AA |                  | A-7675-B05AA |                  | A-7675-C05AA |                  | A-7675-D05AA |
|                  | A-7675-A06AA |                  | A-7675-B06AA |                  | A-7675-C06AA |                  | A-7675-D06AA |
|                  | A-7675-A07AA |                  | A-7675-B07AA |                  | A-7675-C07AA |                  | A-7675-D07AA |
|                  | A-7675-A08AA |                  | A-7675-B08AA |                  | A-7675-C08AA |                  | A-7675-D08AA |
|                  | A-7675-A09AA |                  | A-7675-B09AA |                  | A-7675-C09AA |                  | A-7675-D09AA |
|                  | A-7675-A10AA |                  | A-7675-B10AA | 26-32-0103       | A-7675-C10AA |                  | A-7675-D10AA |
|                  | A-7675-A11AA |                  | A-7675-B11AA |                  | A-7675-C11AA |                  | A-7675-D11AA |
|                  | A-7675-A12AA |                  | A-7675-B12AA |                  | A-7675-C12AA |                  | A-7675-D12AA |
|                  | A-7675-A13AA |                  | A-7675-B13AA |                  | A-7675-C13AA |                  | A-7675-D13AA |
|                  | A-7675-A14AA |                  | A-7675-B14AA |                  | A-7675-C14AA |                  | A-7675-D14AA |
|                  | A-7675-A15AA |                  | A-7675-B15AA |                  | A-7675-C15AA |                  | A-7675-D15AA |
|                  | A-7675-A16AA |                  | A-7675-B16AA | 26-32-0163       | A-7675-C16AA |                  | A-7675-D16AA |
|                  | A-7675-A17AA |                  | A-7675-B17AA |                  | A-7675-C17AA |                  | A-7675-D17AA |
|                  | A-7675-A18AA |                  | A-7675-B18AA |                  | A-7675-C18AA |                  | A-7675-D18AA |
|                  | A-7675-A19AA |                  | A-7675-B19AA |                  | A-7675-C19AA |                  | A-7675-D19AA |
|                  | A-7675-A20AA |                  | A-7675-B20AA |                  | A-7675-C20AA |                  | A-7675-D20AA |
|                  | A-7675-A21AA |                  | A-7675-B21AA |                  | A-7675-C21AA |                  | A-7675-D21AA |
|                  | A-7675-A22AA |                  | A-7675-B22AA |                  | A-7675-C22AA |                  | A-7675-D22AA |
|                  | A-7675-A23AA |                  | A-7675-B23AA |                  | A-7675-C23AA |                  | A-7675-D23AA |
|                  | A-7675-A24AA |                  | A-7675-B24AA |                  | A-7675-C24AA |                  | A-7675-D24AA |

|                                          |                                                                                |                                                                                           |                               |
|------------------------------------------|--------------------------------------------------------------------------------|-------------------------------------------------------------------------------------------|-------------------------------|
| REVISION:<br><b>AZ3</b>                  | ECR/ECN INFORMATION:<br>EC No.: <b>UCP2010-0214</b><br>DATE: <b>12/17/2009</b> | TITLE:<br><b>CONNECTOR ASSEMBLY<br/>KK (3.96)/.156 CENTER<br/>INSULATION DISPLACEMENT</b> | SHEET No.<br><b>4</b>         |
| DOCUMENT NUMBER:<br><b>SDA-7675-****</b> | CREATED / REVISED BY:<br><b>MKIPPER</b>                                        | CHECKED BY:<br><b>SSOUSEK</b>                                                             | APPROVED BY:<br><b>FSMITH</b> |

| A-7675-ANAH                              |                                                                                | A-7675-BNAH      |                                                                                           | A-7675-CNAH      |                               | A-7675-DNAH      |                               |  |
|------------------------------------------|--------------------------------------------------------------------------------|------------------|-------------------------------------------------------------------------------------------|------------------|-------------------------------|------------------|-------------------------------|--|
| HOUSING                                  | 7674-ANAH                                                                      | HOUSING          | 7674-BNAH                                                                                 | HOUSING          | 7674-CNAH                     | HOUSING          | 7674-DNAH                     |  |
| TERM. NO                                 | 40591-A(555)                                                                   | TERM. NO         | 40591-A(555)                                                                              | TERM. NO         | 40591-A(555)                  | TERM. NO         | 40591-A(555)                  |  |
| BACKWALL:                                | NO                                                                             | BACKWALL:        | NO                                                                                        | BACKWALL:        | YES                           | BACKWALL:        | YES                           |  |
| RAMP                                     | NO                                                                             | RAMP             | YES                                                                                       | RAMP             | NO                            | RAMP             | YES                           |  |
| MOLD VOID IN CKT                         | NONE                                                                           | MOLD VOID IN CKT | NONE                                                                                      | MOLD VOID IN CKT | NONE                          | MOLD VOID IN CKT | NONE                          |  |
| VOID TERM.IN CKT                         | NONE                                                                           | VOID TERM.IN CKT | NONE                                                                                      | VOID TERM.IN CKT | NONE                          | VOID TERM.IN CKT | NONE                          |  |
| MATL NO                                  | ENG NO:                                                                        | MATL NO          | ENG NO:                                                                                   | MATL NO          | ENG NO:                       | MATL NO          | ENG NO:                       |  |
|                                          | A-7675-A02AH                                                                   | 26-32-9024       | A-7675-B02AH                                                                              |                  | A-7675-C02AH                  | 26-32-9020       | A-7675-D02AH                  |  |
|                                          | A-7675-A03AH                                                                   | 26-32-9034       | A-7675-B03AH                                                                              |                  | A-7675-C03AH                  | 26-32-9030       | A-7675-D03AH                  |  |
|                                          | A-7675-A04AH                                                                   | 26-32-9044       | A-7675-B04AH                                                                              |                  | A-7675-C04AH                  | 26-32-9040       | A-7675-D04AH                  |  |
|                                          | A-7675-A05AH                                                                   |                  | A-7675-B05AH                                                                              |                  | A-7675-C05AH                  | 26-32-9050       | A-7675-D05AH                  |  |
|                                          | A-7675-A06AH                                                                   | 26-32-9064       | A-7675-B06AH                                                                              |                  | A-7675-C06AH                  | 26-32-9060       | A-7675-D06AH                  |  |
|                                          | A-7675-A07AH                                                                   |                  | A-7675-B07AH                                                                              |                  | A-7675-C07AH                  | 26-32-9070       | A-7675-D07AH                  |  |
|                                          | A-7675-A08AH                                                                   | 26-32-9084       | A-7675-B08AH                                                                              |                  | A-7675-C08AH                  | 26-32-9080       | A-7675-D08AH                  |  |
|                                          | A-7675-A09AH                                                                   |                  | A-7675-B09AH                                                                              |                  | A-7675-C09AH                  | 26-32-9090       | A-7675-D09AH                  |  |
|                                          | A-7675-A10AH                                                                   |                  | A-7675-B10AH                                                                              |                  | A-7675-C10AH                  | 26-32-9100       | A-7675-D10AH                  |  |
|                                          | A-7675-A11AH                                                                   |                  | A-7675-B11AH                                                                              |                  | A-7675-C11AH                  | 26-32-9110       | A-7675-D11AH                  |  |
|                                          | A-7675-A12AH                                                                   |                  | A-7675-B12AH                                                                              |                  | A-7675-C12AH                  | 26-32-9120       | A-7675-D12AH                  |  |
|                                          | A-7675-A13AH                                                                   |                  | A-7675-B13AH                                                                              |                  | A-7675-C13AH                  | 26-32-9130       | A-7675-D13AH                  |  |
|                                          | A-7675-A14AH                                                                   |                  | A-7675-B14AH                                                                              |                  | A-7675-C14AH                  | 26-32-9140       | A-7675-D14AH                  |  |
|                                          | A-7675-A15AH                                                                   |                  | A-7675-B15AH                                                                              |                  | A-7675-C15AH                  | 26-32-9150       | A-7675-D15AH                  |  |
|                                          | A-7675-A16AH                                                                   |                  | A-7675-B16AH                                                                              |                  | A-7675-C16AH                  | 26-32-9160       | A-7675-D16AH                  |  |
|                                          | A-7675-A17AH                                                                   |                  | A-7675-B17AH                                                                              |                  | A-7675-C17AH                  | 26-32-9170       | A-7675-D17AH                  |  |
|                                          | A-7675-A18AH                                                                   |                  | A-7675-B18AH                                                                              |                  | A-7675-C18AH                  | 26-32-9180       | A-7675-D18AH                  |  |
|                                          | A-7675-A19AH                                                                   |                  | A-7675-B19AH                                                                              |                  | A-7675-C19AH                  | 26-32-9190       | A-7675-D19AH                  |  |
|                                          | A-7675-A20AH                                                                   |                  | A-7675-B20AH                                                                              |                  | A-7675-C20AH                  | 26-32-9200       | A-7675-D20AH                  |  |
|                                          | A-7675-A21AH                                                                   |                  | A-7675-B21AH                                                                              |                  | A-7675-C21AH                  | 26-32-9210       | A-7675-D21AH                  |  |
|                                          | A-7675-A22AH                                                                   |                  | A-7675-B22AH                                                                              |                  | A-7675-C22AH                  | 26-32-9220       | A-7675-D22AH                  |  |
|                                          | A-7675-A23AH                                                                   |                  | A-7675-B23AH                                                                              |                  | A-7675-C23AH                  | 26-32-9230       | A-7675-D23AH                  |  |
|                                          | A-7675-A24AH                                                                   |                  | A-7675-B24AH                                                                              |                  | A-7675-C24AH                  | 26-32-9240       | A-7675-D24AH                  |  |
| REVISION:<br><b>AZ3</b>                  | ECR/ECN INFORMATION:<br>EC No.: <b>UCP2010-0214</b><br>DATE: <b>12/17/2009</b> |                  | TITLE:<br><b>CONNECTOR ASSEMBLY<br/>KK (3.96)/.156 CENTER<br/>INSULATION DISPLACEMENT</b> |                  |                               |                  | SHEET No.<br><b>5</b>         |  |
| DOCUMENT NUMBER:<br><b>SDA-7675-****</b> |                                                                                |                  | CREATED / REVISED BY:<br><b>MKIPPER</b>                                                   |                  | CHECKED BY:<br><b>SSOUSEK</b> |                  | APPROVED BY:<br><b>FSMITH</b> |  |





| A-7675-AND       |              | A-7675-BND       |              | A-7675-CND       |              | A-7675-DND       |              |
|------------------|--------------|------------------|--------------|------------------|--------------|------------------|--------------|
| HOUSING          | 7674-AN      | HOUSING          | 7674-BN      | HOUSING          | 7674-CN      | HOUSING          | 7674-DN      |
| TERM. NO         | 40591-D(102) | TERM. NO         | 40591-D(102) | TERM. NO         | 40591-D(102) | TERM. NO         | 40591-D(102) |
| BACKWALL:        | NO           | BACKWALL:        | NO           | BACKWALL:        | YES          | BACKWALL:        | YES          |
| RAMP             | NO           | RAMP             | YES          | RAMP             | NO           | RAMP             | YES          |
| MOLD VOID IN CKT | NONE         | MOLD VOID IN CKT | NONE         | MOLD VOID IN CKT | NONE         | MOLD VOID IN CKT | NONE         |
| VOID TERM.IN CKT | NONE         | VOID TERM.IN CKT | NONE         | VOID TERM.IN CKT | NONE         | VOID TERM.IN CKT | NONE         |
| MATL NO          | ENG NO:      | MATL NO          | ENG NO:      | MATL NO          | ENG NO:      | MATL NO          | ENG NO:      |
| 09-07-3027       | A-7675-A02D  | 09-06-3027       | A-7675-B02D  | 09-07-3028       | A-7675-C02D  | 09-06-3028       | A-7675-D02D  |
| 09-07-3037       | A-7675-A03D  | 09-06-3037       | A-7675-B03D  | 09-07-3038       | A-7675-C03D  | 09-06-3038       | A-7675-D03D  |
| 09-07-3047       | A-7675-A04D  | 09-06-3047       | A-7675-B04D  | 09-07-3048       | A-7675-C04D  | 09-06-3048       | A-7675-D04D  |
| 09-07-3057       | A-7675-A05D  | 09-06-3057       | A-7675-B05D  | 09-07-3058       | A-7675-C05D  | 09-06-3058       | A-7675-D05D  |
| 09-07-3067       | A-7675-A06D  | 09-06-3067       | A-7675-B06D  | 09-07-3068       | A-7675-C06D  | 09-06-3068       | A-7675-D06D  |
| 09-07-3077       | A-7675-A07D  | 09-06-3077       | A-7675-B07D  | 09-07-3078       | A-7675-C07D  | 09-06-3078       | A-7675-D07D  |
| 09-07-3087       | A-7675-A08D  | 09-06-3087       | A-7675-B08D  | 09-07-3088       | A-7675-C08D  | 09-06-3088       | A-7675-D08D  |
| 09-07-3097       | A-7675-A09D  | 09-06-3097       | A-7675-B09D  | 09-07-3098       | A-7675-C09D  | 09-06-3098       | A-7675-D09D  |
| 09-07-3107       | A-7675-A10D  | 09-06-3107       | A-7675-B10D  | 09-07-3108       | A-7675-C10D  | 09-06-3108       | A-7675-D10D  |
| 09-07-3117       | A-7675-A11D  | 09-06-3117       | A-7675-B11D  | 09-07-3118       | A-7675-C11D  | 09-06-3118       | A-7675-D11D  |
| 09-07-3127       | A-7675-A12D  | 09-06-3127       | A-7675-B12D  | 09-07-3128       | A-7675-C12D  | 09-06-3128       | A-7675-D12D  |
| 09-07-3137       | A-7675-A13D  | 09-06-3137       | A-7675-B13D  | 09-07-3138       | A-7675-C13D  | 09-06-3138       | A-7675-D13D  |
| 09-07-3147       | A-7675-A14D  | 09-06-3147       | A-7675-B14D  | 09-07-3148       | A-7675-C14D  | 09-06-3148       | A-7675-D14D  |
| 09-07-3157       | A-7675-A15D  | 09-06-3157       | A-7675-B15D  | 09-07-3158       | A-7675-C15D  | 09-06-3158       | A-7675-D15D  |
| 09-07-3167       | A-7675-A16D  | 09-06-3167       | A-7675-B16D  | 09-07-3168       | A-7675-C16D  | 09-06-3168       | A-7675-D16D  |
| 09-07-3177       | A-7675-A17D  | 09-06-3177       | A-7675-B17D  | 09-07-3178       | A-7675-C17D  | 09-06-3178       | A-7675-D17D  |
| 09-07-3187       | A-7675-A18D  | 09-06-3187       | A-7675-B18D  | 09-07-3188       | A-7675-C18D  | 09-06-3188       | A-7675-D18D  |
| 09-07-3197       | A-7675-A19D  | 09-06-3197       | A-7675-B19D  | 09-07-3198       | A-7675-C19D  | 09-06-3198       | A-7675-D19D  |
| 09-07-3207       | A-7675-A20D  | 09-06-3207       | A-7675-B20D  | 09-07-3208       | A-7675-C20D  | 09-06-3208       | A-7675-D20D  |
| 09-07-3217       | A-7675-A21D  | 09-06-3217       | A-7675-B21D  | 09-07-3218       | A-7675-C21D  | 09-06-3218       | A-7675-D21D  |
| 09-07-3227       | A-7675-A22D  | 09-06-3227       | A-7675-B22D  | 09-07-3228       | A-7675-C22D  | 09-06-3228       | A-7675-D22D  |
| 09-07-3237       | A-7675-A23D  | 09-06-3237       | A-7675-B23D  | 09-07-3238       | A-7675-C23D  | 09-06-3238       | A-7675-D23D  |
| 09-07-3247       | A-7675-A24D  | 09-06-3247       | A-7675-B24D  | 09-07-3248       | A-7675-C24D  | 09-06-3248       | A-7675-D24D  |

|                                          |                                                                                |                                                                                           |                               |
|------------------------------------------|--------------------------------------------------------------------------------|-------------------------------------------------------------------------------------------|-------------------------------|
| REVISION:<br><b>AZ3</b>                  | ECR/ECN INFORMATION:<br>EC No.: <b>UCP2010-0214</b><br>DATE: <b>12/17/2009</b> | TITLE:<br><b>CONNECTOR ASSEMBLY<br/>KK (3.96)/.156 CENTER<br/>INSULATION DISPLACEMENT</b> | SHEET No.<br><b>7</b>         |
| DOCUMENT NUMBER:<br><b>SDA-7675-****</b> | CREATED / REVISED BY:<br><b>MKIPPER</b>                                        | CHECKED BY:<br><b>SSOUSEK</b>                                                             | APPROVED BY:<br><b>FSMITH</b> |

| A-7675-ANDA                              |                                                                                | A-7675-BNDA                             |                                                                                           | A-7675-CNDA                   |              | A-7675-DNDA                   |              |
|------------------------------------------|--------------------------------------------------------------------------------|-----------------------------------------|-------------------------------------------------------------------------------------------|-------------------------------|--------------|-------------------------------|--------------|
| HOUSING                                  | 7674-AN                                                                        | HOUSING                                 | 7674-BN                                                                                   | HOUSING                       | 7674-CN      | HOUSING                       | 7674-DN      |
| TERM. NO                                 | 40591-D(502)                                                                   | TERM. NO                                | 40591-D(502)                                                                              | TERM. NO                      | 40591-D(502) | TERM. NO                      | 40591-D(502) |
| BACKWALL:                                | NO                                                                             | BACKWALL:                               | NO                                                                                        | BACKWALL:                     | YES          | BACKWALL:                     | YES          |
| RAMP                                     | NO                                                                             | RAMP                                    | YES                                                                                       | RAMP                          | NO           | RAMP                          | YES          |
| MOLD VOID IN CKT                         | NONE                                                                           | MOLD VOID IN CKT                        | NONE                                                                                      | MOLD VOID IN CKT              | NONE         | MOLD VOID IN CKT              | NONE         |
| VOID TERM.IN CKT                         | NONE                                                                           | VOID TERM.IN CKT                        | NONE                                                                                      | VOID TERM.IN CKT              | NONE         | VOID TERM.IN CKT              | NONE         |
| MATL NO                                  | ENG NO:                                                                        | MATL NO                                 | ENG NO:                                                                                   | MATL NO                       | ENG NO:      | MATL NO                       | ENG NO:      |
|                                          | A-7675-A02DA                                                                   |                                         | A-7675-B02DA                                                                              |                               | A-7675-C02DA |                               | A-7675-D02DA |
|                                          | A-7675-A03DA                                                                   |                                         | A-7675-B03DA                                                                              |                               | A-7675-C03DA |                               | A-7675-D03DA |
|                                          | A-7675-A04DA                                                                   |                                         | A-7675-B04DA                                                                              |                               | A-7675-C04DA |                               | A-7675-D04DA |
|                                          | A-7675-A05DA                                                                   |                                         | A-7675-B05DA                                                                              |                               | A-7675-C05DA |                               | A-7675-D05DA |
|                                          | A-7675-A06DA                                                                   |                                         | A-7675-B06DA                                                                              | 26-32-3068                    | A-7675-C06DA |                               | A-7675-D06DA |
|                                          | A-7675-A07DA                                                                   |                                         | A-7675-B07DA                                                                              |                               | A-7675-C07DA |                               | A-7675-D07DA |
|                                          | A-7675-A08DA                                                                   |                                         | A-7675-B08DA                                                                              |                               | A-7675-C08DA | 26-32-3089                    | A-7675-D08DA |
|                                          | A-7675-A09DA                                                                   |                                         | A-7675-B09DA                                                                              |                               | A-7675-C09DA |                               | A-7675-D09DA |
|                                          | A-7675-A10DA                                                                   |                                         | A-7675-B10DA                                                                              |                               | A-7675-C10DA |                               | A-7675-D10DA |
|                                          | A-7675-A11DA                                                                   |                                         | A-7675-B11DA                                                                              |                               | A-7675-C11DA |                               | A-7675-D11DA |
|                                          | A-7675-A12DA                                                                   |                                         | A-7675-B12DA                                                                              |                               | A-7675-C12DA |                               | A-7675-D12DA |
|                                          | A-7675-A13DA                                                                   |                                         | A-7675-B13DA                                                                              |                               | A-7675-C13DA |                               | A-7675-D13DA |
|                                          | A-7675-A14DA                                                                   |                                         | A-7675-B14DA                                                                              |                               | A-7675-C14DA |                               | A-7675-D14DA |
|                                          | A-7675-A15DA                                                                   |                                         | A-7675-B15DA                                                                              |                               | A-7675-C15DA |                               | A-7675-D15DA |
|                                          | A-7675-A16DA                                                                   |                                         | A-7675-B16DA                                                                              |                               | A-7675-C16DA |                               | A-7675-D16DA |
|                                          | A-7675-A17DA                                                                   |                                         | A-7675-B17DA                                                                              |                               | A-7675-C17DA |                               | A-7675-D17DA |
|                                          | A-7675-A18DA                                                                   |                                         | A-7675-B18DA                                                                              |                               | A-7675-C18DA |                               | A-7675-D18DA |
|                                          | A-7675-A19DA                                                                   |                                         | A-7675-B19DA                                                                              |                               | A-7675-C19DA |                               | A-7675-D19DA |
|                                          | A-7675-A20DA                                                                   |                                         | A-7675-B20DA                                                                              |                               | A-7675-C20DA |                               | A-7675-D20DA |
|                                          | A-7675-A21DA                                                                   |                                         | A-7675-B21DA                                                                              |                               | A-7675-C21DA |                               | A-7675-D21DA |
|                                          | A-7675-A22DA                                                                   |                                         | A-7675-B22DA                                                                              |                               | A-7675-C22DA |                               | A-7675-D22DA |
|                                          | A-7675-A23DA                                                                   |                                         | A-7675-B23DA                                                                              |                               | A-7675-C23DA |                               | A-7675-D23DA |
|                                          | A-7675-A24DA                                                                   |                                         | A-7675-B24DA                                                                              |                               | A-7675-C24DA |                               | A-7675-D24DA |
| REVISION:<br><b>AZ3</b>                  | ECR/ECN INFORMATION:<br>EC No.: <b>UCP2010-0214</b><br>DATE: <b>12/17/2009</b> |                                         | TITLE:<br><b>CONNECTOR ASSEMBLY<br/>KK (3.96)/.156 CENTER<br/>INSULATION DISPLACEMENT</b> |                               |              | SHEET No.<br><b>8</b>         |              |
| DOCUMENT NUMBER:<br><b>SDA-7675-****</b> |                                                                                | CREATED / REVISED BY:<br><b>MKIPPER</b> |                                                                                           | CHECKED BY:<br><b>SSOUSEK</b> |              | APPROVED BY:<br><b>FSMITH</b> |              |

| A-7675-ANJ       |              | A-7675-BNJ       |              | A-7675-CNJ       |              | A-7675-DNJ       |              |
|------------------|--------------|------------------|--------------|------------------|--------------|------------------|--------------|
| HOUSING          | 7674-AN      | HOUSING          | 7674-BN      | HOUSING          | 7674-CN      | HOUSING          | 7674-DN      |
| TERM. NO         | 40591-J(102) | TERM. NO         | 40591-J(102) | TERM. NO         | 40591-J(102) | TERM. NO         | 40591-J(102) |
| BACKWALL:        | NO           | BACKWALL:        | NO           | BACKWALL:        | YES          | BACKWALL:        | YES          |
| RAMP             | NO           | RAMP             | YES          | RAMP             | NO           | RAMP             | YES          |
| MOLD VOID IN CKT | NONE         | MOLD VOID IN CKT | NONE         | MOLD VOID IN CKT | NONE         | MOLD VOID IN CKT | NONE         |
| VOID TERM.IN CKT | NONE         | VOID TERM.IN CKT | NONE         | VOID TERM.IN CKT | NONE         | VOID TERM.IN CKT | NONE         |
| MATL NO          | ENG NO:      | MATL NO          | ENG NO:      | MATL NO          | ENG NO:      | MATL NO          | ENG NO:      |
| 09-07-5027       | A-7675-A02J  | 09-06-5027       | A-7675-B02J  | 09-07-5028       | A-7675-C02J  | 09-06-5028       | A-7675-D02J  |
| 09-07-5037       | A-7675-A03J  | 09-06-5037       | A-7675-B03J  | 09-07-5038       | A-7675-C03J  | 09-06-5038       | A-7675-D03J  |
| 09-07-5047       | A-7675-A04J  | 09-06-5047       | A-7675-B04J  | 09-07-5048       | A-7675-C04J  | 09-06-5048       | A-7675-D04J  |
| 09-07-5057       | A-7675-A05J  | 09-06-5057       | A-7675-B05J  | 09-07-5058       | A-7675-C05J  | 09-06-5058       | A-7675-D05J  |
| 09-07-5067       | A-7675-A06J  | 09-06-5067       | A-7675-B06J  | 09-07-5068       | A-7675-C06J  | 09-06-5068       | A-7675-D06J  |
| 09-07-5077       | A-7675-A07J  | 09-06-5077       | A-7675-B07J  | 09-07-5078       | A-7675-C07J  | 09-06-5078       | A-7675-D07J  |
| 09-07-5087       | A-7675-A08J  | 09-06-5087       | A-7675-B08J  | 09-07-5088       | A-7675-C08J  | 09-06-5088       | A-7675-D08J  |
| 09-07-5097       | A-7675-A09J  | 09-06-5097       | A-7675-B09J  | 09-07-5098       | A-7675-C09J  | 09-06-5098       | A-7675-D09J  |
| 09-07-5107       | A-7675-A10J  | 09-06-5107       | A-7675-B10J  | 09-07-5108       | A-7675-C10J  | 09-06-5108       | A-7675-D10J  |
| 09-07-5117       | A-7675-A11J  | 09-06-5117       | A-7675-B11J  | 09-07-5118       | A-7675-C11J  | 09-06-5118       | A-7675-D11J  |
| 09-07-5127       | A-7675-A12J  | 09-06-5127       | A-7675-B12J  | 09-07-5128       | A-7675-C12J  | 09-06-5128       | A-7675-D12J  |
| 09-07-5137       | A-7675-A13J  | 09-06-5137       | A-7675-B13J  | 09-07-5138       | A-7675-C13J  | 09-06-5138       | A-7675-D13J  |
| 09-07-5147       | A-7675-A14J  | 09-06-5147       | A-7675-B14J  | 09-07-5148       | A-7675-C14J  | 09-06-5148       | A-7675-D14J  |
| 09-07-5157       | A-7675-A15J  | 09-06-5157       | A-7675-B15J  | 09-07-5158       | A-7675-C15J  | 09-06-5158       | A-7675-D15J  |
| 09-07-5167       | A-7675-A16J  | 09-06-5167       | A-7675-B16J  | 09-07-5168       | A-7675-C16J  | 09-06-5168       | A-7675-D16J  |
| 09-07-5177       | A-7675-A17J  | 09-06-5177       | A-7675-B17J  | 09-07-5178       | A-7675-C17J  | 09-06-5178       | A-7675-D17J  |
| 09-07-5187       | A-7675-A18J  | 09-06-5187       | A-7675-B18J  | 09-07-5188       | A-7675-C18J  | 09-06-5188       | A-7675-D18J  |
| 09-07-5197       | A-7675-A19J  | 09-06-5197       | A-7675-B19J  | 09-07-5198       | A-7675-C19J  | 09-06-5198       | A-7675-D19J  |
| 09-07-5207       | A-7675-A20J  | 09-06-5207       | A-7675-B20J  | 09-07-5208       | A-7675-C20J  | 09-06-5208       | A-7675-D20J  |
| 09-07-5217       | A-7675-A21J  | 09-06-5217       | A-7675-B21J  | 09-07-5218       | A-7675-C21J  | 09-06-5218       | A-7675-D21J  |
| 09-07-5227       | A-7675-A22J  | 09-06-5227       | A-7675-B22J  | 09-07-5228       | A-7675-C22J  | 09-06-5228       | A-7675-D22J  |
| 09-07-5237       | A-7675-A23J  | 09-06-5237       | A-7675-B23J  | 09-07-5238       | A-7675-C23J  | 09-06-5238       | A-7675-D23J  |
| 09-07-5247       | A-7675-A24J  | 09-06-5247       | A-7675-B24J  | 09-07-5248       | A-7675-C24J  | 09-06-5248       | A-7675-D24J  |

|                                          |                                                                                |                                                                                           |                               |
|------------------------------------------|--------------------------------------------------------------------------------|-------------------------------------------------------------------------------------------|-------------------------------|
| REVISION:<br><b>AZ3</b>                  | ECR/ECN INFORMATION:<br>EC No.: <b>UCP2010-0214</b><br>DATE: <b>12/17/2009</b> | TITLE:<br><b>CONNECTOR ASSEMBLY<br/>KK (3.96)/.156 CENTER<br/>INSULATION DISPLACEMENT</b> | SHEET No.<br><b>9</b>         |
| DOCUMENT NUMBER:<br><b>SDA-7675-****</b> | CREATED / REVISED BY:<br><b>MKIPPER</b>                                        | CHECKED BY:<br><b>SSOUSEK</b>                                                             | APPROVED BY:<br><b>FSMITH</b> |

| A-7675-ANJA                              |                                                                  | A-7675-BNJA      |                                                                                           | A-7675-CNJA                   |                               | A-7675-DNJA      |                        |  |
|------------------------------------------|------------------------------------------------------------------|------------------|-------------------------------------------------------------------------------------------|-------------------------------|-------------------------------|------------------|------------------------|--|
| HOUSING                                  | 7674-AN                                                          | HOUSING          | 7674-BN                                                                                   | HOUSING                       | 7674-CN                       | HOUSING          | 7674-DN                |  |
| TERM. NO                                 | 40591-J(502)                                                     | TERM. NO         | 40591-J(502)                                                                              | TERM. NO                      | 40591-J(502)                  | TERM. NO         | 40591-J(502)           |  |
| BACKWALL:                                | NO                                                               | BACKWALL:        | NO                                                                                        | BACKWALL:                     | YES                           | BACKWALL:        | YES                    |  |
| RAMP                                     | NO                                                               | RAMP             | YES                                                                                       | RAMP                          | NO                            | RAMP             | YES                    |  |
| MOLD VOID IN CKT                         | NONE                                                             | MOLD VOID IN CKT | NONE                                                                                      | MOLD VOID IN CKT              | NONE                          | MOLD VOID IN CKT | NONE                   |  |
| VOID TERM.IN CKT                         | NONE                                                             | VOID TERM.IN CKT | NONE                                                                                      | VOID TERM.IN CKT              | NONE                          | VOID TERM.IN CKT | NONE                   |  |
| MATL NO                                  | ENG NO:                                                          | MATL NO          | ENG NO:                                                                                   | MATL NO                       | ENG NO:                       | MATL NO          | ENG NO:                |  |
|                                          | A-7675-A02JA                                                     |                  | A-7675-B02JA                                                                              |                               | A-7675-C02JA                  | 26-31-5028       | A-7675-D02JA           |  |
|                                          | A-7675-A03JA                                                     |                  | A-7675-B03JA                                                                              |                               | A-7675-C03JA                  | 26-31-5038       | A-7675-D03JA           |  |
|                                          | A-7675-A04JA                                                     |                  | A-7675-B04JA                                                                              | 26-32-5048                    | A-7675-C04JA                  | 26-31-5048       | A-7675-D04JA           |  |
|                                          | A-7675-A05JA                                                     |                  | A-7675-B05JA                                                                              |                               | A-7675-C05JA                  | 26-31-5058       | A-7675-D05JA           |  |
| 26-32-5067                               | A-7675-A06JA                                                     |                  | A-7675-B06JA                                                                              | 26-32-5068                    | A-7675-C06JA                  | 26-31-5068       | A-7675-D06JA           |  |
|                                          | A-7675-A07JA                                                     |                  | A-7675-B07JA                                                                              |                               | A-7675-C07JA                  |                  | A-7675-D07JA           |  |
|                                          | A-7675-A08JA                                                     | 21-62-2001       | A-7675-B08JA                                                                              |                               | A-7675-C08JA                  | 26-31-5088       | A-7675-D08JA           |  |
|                                          | A-7675-A09JA                                                     |                  | A-7675-B09JA                                                                              |                               | A-7675-C09JA                  |                  | A-7675-D09JA           |  |
|                                          | A-7675-A10JA                                                     |                  | A-7675-B10JA                                                                              |                               | A-7675-C10JA                  | 26-31-5108       | A-7675-D10JA           |  |
|                                          | A-7675-A11JA                                                     |                  | A-7675-B11JA                                                                              |                               | A-7675-C11JA                  |                  | A-7675-D11JA           |  |
|                                          | A-7675-A12JA                                                     | 26-32-5129       | A-7675-B12JA                                                                              |                               | A-7675-C12JA                  |                  | A-7675-D12JA           |  |
|                                          | A-7675-A13JA                                                     |                  | A-7675-B13JA                                                                              |                               | A-7675-C13JA                  |                  | A-7675-D13JA           |  |
|                                          | A-7675-A14JA                                                     |                  | A-7675-B14JA                                                                              |                               | A-7675-C14JA                  |                  | A-7675-D14JA           |  |
|                                          | A-7675-A15JA                                                     |                  | A-7675-B15JA                                                                              |                               | A-7675-C15JA                  | 26-31-5158       | A-7675-D15JA           |  |
|                                          | A-7675-A16JA                                                     |                  | A-7675-B16JA                                                                              |                               | A-7675-C16JA                  |                  | A-7675-D16JA           |  |
|                                          | A-7675-A17JA                                                     |                  | A-7675-B17JA                                                                              |                               | A-7675-C17JA                  |                  | A-7675-D17JA           |  |
|                                          | A-7675-A18JA                                                     |                  | A-7675-B18JA                                                                              |                               | A-7675-C18JA                  |                  | A-7675-D18JA           |  |
|                                          | A-7675-A19JA                                                     |                  | A-7675-B19JA                                                                              |                               | A-7675-C19JA                  |                  | A-7675-D19JA           |  |
|                                          | A-7675-A20JA                                                     |                  | A-7675-B20JA                                                                              |                               | A-7675-C20JA                  |                  | A-7675-D20JA           |  |
|                                          | A-7675-A21JA                                                     |                  | A-7675-B21JA                                                                              |                               | A-7675-C21JA                  |                  | A-7675-D21JA           |  |
|                                          | A-7675-A22JA                                                     |                  | A-7675-B22JA                                                                              |                               | A-7675-C22JA                  |                  | A-7675-D22JA           |  |
|                                          | A-7675-A23JA                                                     |                  | A-7675-B23JA                                                                              |                               | A-7675-C23JA                  |                  | A-7675-D23JA           |  |
|                                          | A-7675-A24JA                                                     |                  | A-7675-B24JA                                                                              |                               | A-7675-C24JA                  |                  | A-7675-D24JA           |  |
| REVISION:<br><b>AZ3</b>                  | ECR/ECN INFORMATION:<br>EC No.: UCP2010-0214<br>DATE: 12/17/2009 |                  | TITLE:<br><b>CONNECTOR ASSEMBLY<br/>KK (3.96)/.156 CENTER<br/>INSULATION DISPLACEMENT</b> |                               |                               |                  | SHEET No.<br><b>10</b> |  |
| DOCUMENT NUMBER:<br><b>SDA-7675-****</b> |                                                                  |                  | CREATED / REVISED BY:<br><b>MKIPPER</b>                                                   | CHECKED BY:<br><b>SSOUSEK</b> | APPROVED BY:<br><b>FSMITH</b> |                  |                        |  |

| A-7675-ANJE      |              | A-7675-BNJE      |              | A-7675-CNJE      |              | A-7675-DNJE      |              |
|------------------|--------------|------------------|--------------|------------------|--------------|------------------|--------------|
| HOUSING          | 7674-AN      | HOUSING          | 7674-BN      | HOUSING          | 7674-CN      | HOUSING          | 7674-DN      |
| TERM. NO         | 40591-J(565) | TERM. NO         | 40591-J(565) | TERM. NO         | 40591-J(565) | TERM. NO         | 40591-J(565) |
| BACKWALL:        | NO           | BACKWALL:        | NO           | BACKWALL:        | YES          | BACKWALL:        | YES          |
| RAMP             | NO           | RAMP             | YES          | RAMP             | NO           | RAMP             | YES          |
| MOLD VOID IN CKT | NONE         | MOLD VOID IN CKT | NONE         | MOLD VOID IN CKT | NONE         | MOLD VOID IN CKT | NONE         |
| VOID TERM.IN CKT | NONE         | VOID TERM.IN CKT | NONE         | VOID TERM.IN CKT | NONE         | VOID TERM.IN CKT | NONE         |
| MATL NO          | ENG NO:      | MATL NO          | ENG NO:      | MATL NO          | ENG NO:      | MATL NO          | ENG NO:      |
|                  | A-7675-A02JE |                  | A-7675-B02JE |                  | A-7675-C02JE |                  | A-7675-D02JE |
|                  | A-7675-A03JE |                  | A-7675-B03JE |                  | A-7675-C03JE |                  | A-7675-D03JE |
|                  | A-7675-A04JE |                  | A-7675-B04JE |                  | A-7675-C04JE |                  | A-7675-D04JE |
|                  | A-7675-A05JE |                  | A-7675-B05JE |                  | A-7675-C05JE |                  | A-7675-D05JE |
| 26-38-5067       | A-7675-A06JE |                  | A-7675-B06JE | 26-38-5068       | A-7675-C06JE |                  | A-7675-D06JE |
|                  | A-7675-A07JE |                  | A-7675-B07JE |                  | A-7675-C07JE |                  | A-7675-D07JE |
|                  | A-7675-A08JE |                  | A-7675-B08JE |                  | A-7675-C08JE |                  | A-7675-D08JE |
|                  | A-7675-A09JE |                  | A-7675-B09JE |                  | A-7675-C09JE |                  | A-7675-D09JE |
|                  | A-7675-A10JE |                  | A-7675-B10JE |                  | A-7675-C10JE |                  | A-7675-D10JE |
|                  | A-7675-A11JE |                  | A-7675-B11JE |                  | A-7675-C11JE |                  | A-7675-D11JE |
|                  | A-7675-A12JE |                  | A-7675-B12JE |                  | A-7675-C12JE |                  | A-7675-D12JE |
|                  | A-7675-A13JE |                  | A-7675-B13JE |                  | A-7675-C13JE |                  | A-7675-D13JE |
| 09-10-5149       | A-7675-A14JE |                  | A-7675-B14JE |                  | A-7675-C14JE |                  | A-7675-D14JE |
|                  | A-7675-A15JE |                  | A-7675-B15JE |                  | A-7675-C15JE |                  | A-7675-D15JE |
|                  | A-7675-A16JE |                  | A-7675-B16JE |                  | A-7675-C16JE |                  | A-7675-D16JE |
|                  | A-7675-A17JE |                  | A-7675-B17JE |                  | A-7675-C17JE |                  | A-7675-D17JE |
|                  | A-7675-A18JE |                  | A-7675-B18JE |                  | A-7675-C18JE |                  | A-7675-D18JE |
|                  |              |                  |              |                  |              |                  |              |
|                  |              |                  |              |                  |              |                  |              |
|                  |              |                  |              |                  |              |                  |              |
|                  |              |                  |              |                  |              |                  |              |
|                  |              |                  |              |                  |              |                  |              |
|                  |              |                  |              |                  |              |                  |              |
|                  |              |                  |              |                  |              |                  |              |

|                                          |                                                                                |                                                                                           |                               |
|------------------------------------------|--------------------------------------------------------------------------------|-------------------------------------------------------------------------------------------|-------------------------------|
| REVISION:<br><b>AZ3</b>                  | ECR/ECN INFORMATION:<br>EC No.: <b>UCP2010-0214</b><br>DATE: <b>12/17/2009</b> | TITLE:<br><b>CONNECTOR ASSEMBLY<br/>KK (3.96)/.156 CENTER<br/>INSULATION DISPLACEMENT</b> | SHEET No.<br><b>11</b>        |
| DOCUMENT NUMBER:<br><b>SDA-7675-****</b> | CREATED / REVISED BY:<br><b>MKIPPER</b>                                        | CHECKED BY:<br><b>SSOUSEK</b>                                                             | APPROVED BY:<br><b>FSMITH</b> |

| A-7675-ANJH      |              | A-7675-BNJH      |              | A-7675-CNJH      |              | A-7675-DNJH      |              |
|------------------|--------------|------------------|--------------|------------------|--------------|------------------|--------------|
| HOUSING          | 7674-AN      | HOUSING          | 7674-BN      | HOUSING          | 7674-CN      | HOUSING          | 7674-DN      |
| TERM. NO         | 40591-J(555) | TERM. NO         | 40591-J(555) | TERM. NO         | 40591-J(555) | TERM. NO         | 40591-J(555) |
| BACKWALL:        | NO           | BACKWALL:        | NO           | BACKWALL:        | YES          | BACKWALL:        | YES          |
| RAMP             | NO           | RAMP             | YES          | RAMP             | NO           | RAMP             | YES          |
| MOLD VOID IN CKT | NONE         | MOLD VOID IN CKT | NONE         | MOLD VOID IN CKT | NONE         | MOLD VOID IN CKT | NONE         |
| VOID TERM.IN CKT | NONE         | VOID TERM.IN CKT | NONE         | VOID TERM.IN CKT | NONE         | VOID TERM.IN CKT | NONE         |
| MATL NO          | ENG NO:      | MATL NO          | ENG NO:      | MATL NO          | ENG NO:      | MATL NO          | ENG NO:      |
|                  | A-7675-A02JH |                  | A-7675-B02JH |                  | A-7675-C02JH | 26-32-9025       | A-7675-D02JH |
|                  | A-7675-A03JH |                  | A-7675-B03JH |                  | A-7675-C03JH |                  | A-7675-D03JH |
|                  | A-7675-A04JH |                  | A-7675-B04JH |                  | A-7675-C04JH |                  | A-7675-D04JH |
|                  | A-7675-A05JH |                  | A-7675-B05JH |                  | A-7675-C05JH |                  | A-7675-D05JH |
|                  | A-7675-A06JH |                  | A-7675-B06JH |                  | A-7675-C06JH |                  | A-7675-D06JH |
|                  | A-7675-A07JH |                  | A-7675-B07JH |                  | A-7675-C07JH |                  | A-7675-D07JH |
|                  | A-7675-A08JH |                  | A-7675-B08JH |                  | A-7675-C08JH | 26-32-9085       | A-7675-D08JH |
|                  | A-7675-A09JH |                  | A-7675-B09JH |                  | A-7675-C09JH |                  | A-7675-D09JH |
|                  | A-7675-A10JH |                  | A-7675-B10JH |                  | A-7675-C10JH |                  | A-7675-D10JH |
|                  | A-7675-A11JH |                  | A-7675-B11JH |                  | A-7675-C11JH |                  | A-7675-D11JH |
|                  | A-7675-A12JH |                  | A-7675-B12JH |                  | A-7675-C12JH |                  | A-7675-D12JH |
|                  | A-7675-A13JH |                  | A-7675-B13JH |                  | A-7675-C13JH |                  | A-7675-D13JH |
|                  | A-7675-A14JH |                  | A-7675-B14JH |                  | A-7675-C14JH |                  | A-7675-D14JH |
|                  | A-7675-A15JH |                  | A-7675-B15JH |                  | A-7675-C15JH | 26-32-9155       | A-7675-D15JH |
|                  | A-7675-A16JH |                  | A-7675-B16JH |                  | A-7675-C16JH |                  | A-7675-D16JH |
|                  | A-7675-A17JH |                  | A-7675-B17JH |                  | A-7675-C17JH |                  | A-7675-D17JH |
|                  | A-7675-A18JH |                  | A-7675-B18JH |                  | A-7675-C18JH |                  | A-7675-D18JH |
|                  | A-7675-A19JH |                  | A-7675-B19JH |                  | A-7675-C19JH |                  | A-7675-D19JH |
|                  | A-7675-A20JH |                  | A-7675-B20JH |                  | A-7675-C20JH |                  | A-7675-D20JH |
|                  | A-7675-A21JH |                  | A-7675-B21JH |                  | A-7675-C21JH |                  | A-7675-D21JH |
|                  | A-7675-A22JH |                  | A-7675-B22JH |                  | A-7675-C22JH |                  | A-7675-D22JH |
|                  | A-7675-A23JH |                  | A-7675-B23JH |                  | A-7675-C23JH |                  | A-7675-D23JH |
|                  | A-7675-A24JH |                  | A-7675-B24JH |                  | A-7675-C24JH |                  | A-7675-D24JH |

|                                          |                                                                                |                                                                                           |                               |
|------------------------------------------|--------------------------------------------------------------------------------|-------------------------------------------------------------------------------------------|-------------------------------|
| REVISION:<br><b>AZ3</b>                  | ECR/ECN INFORMATION:<br>EC No.: <b>UCP2010-0214</b><br>DATE: <b>12/17/2009</b> | TITLE:<br><b>CONNECTOR ASSEMBLY<br/>KK (3.96)/.156 CENTER<br/>INSULATION DISPLACEMENT</b> | SHEET No.<br><b>12</b>        |
| DOCUMENT NUMBER:<br><b>SDA-7675-****</b> | CREATED / REVISED BY:<br><b>MKIPPER</b>                                        | CHECKED BY:<br><b>SSOUSEK</b>                                                             | APPROVED BY:<br><b>FSMITH</b> |



| A-7675-ANL       |              | A-7675-BNL       |              | A-7675-CNL       |              | A-7675-DNL       |              |
|------------------|--------------|------------------|--------------|------------------|--------------|------------------|--------------|
| HOUSING          | 7674-AN      | HOUSING          | 7674-BN      | HOUSING          | 7674-CN      | HOUSING          | 7674-DN      |
| TERM. NO         | 40591-L(102) | TERM. NO         | 40591-L(102) | TERM. NO         | 40591-L(102) | TERM. NO         | 40591-L(102) |
| BACKWALL:        | NO           | BACKWALL:        | NO           | BACKWALL:        | YES          | BACKWALL:        | YES          |
| RAMP             | NO           | RAMP             | YES          | RAMP             | NO           | RAMP             | YES          |
| MOLD VOID IN CKT | NONE         | MOLD VOID IN CKT | NONE         | MOLD VOID IN CKT | NONE         | MOLD VOID IN CKT | NONE         |
| VOID TERM.IN CKT | NONE         | VOID TERM.IN CKT | NONE         | VOID TERM.IN CKT | NONE         | VOID TERM.IN CKT | NONE         |
| MATL NO          | ENG NO:      | MATL NO          | ENG NO:      | MATL NO          | ENG NO:      | MATL NO          | ENG NO:      |
| 09-07-2027       | A-7675-A02L  | 09-06-2027       | A-7675-B02L  | 09-07-2028       | A-7675-C02L  | 09-06-2028       | A-7675-D02L  |
| 09-07-2037       | A-7675-A03L  | 09-06-2037       | A-7675-B03L  | 09-07-2038       | A-7675-C03L  | 09-06-2038       | A-7675-D03L  |
| 09-07-2047       | A-7675-A04L  | 09-06-2047       | A-7675-B04L  | 09-07-2048       | A-7675-C04L  | 09-06-2048       | A-7675-D04L  |
| 09-07-2057       | A-7675-A05L  | 09-06-2057       | A-7675-B05L  | 09-07-2058       | A-7675-C05L  | 09-06-2058       | A-7675-D05L  |
| 09-07-2067       | A-7675-A06L  | 09-06-2067       | A-7675-B06L  | 09-07-2068       | A-7675-C06L  | 09-06-2068       | A-7675-D06L  |
| 09-07-2077       | A-7675-A07L  | 09-06-2077       | A-7675-B07L  | 09-07-2078       | A-7675-C07L  | 09-06-2078       | A-7675-D07L  |
| 09-07-2087       | A-7675-A08L  | 09-06-2087       | A-7675-B08L  | 09-07-2088       | A-7675-C08L  | 09-06-2088       | A-7675-D08L  |
| 09-07-2097       | A-7675-A09L  | 09-06-2097       | A-7675-B09L  | 09-07-2098       | A-7675-C09L  | 09-06-2098       | A-7675-D09L  |
| 09-07-2107       | A-7675-A10L  | 09-06-2107       | A-7675-B10L  | 09-07-2108       | A-7675-C10L  | 09-06-2108       | A-7675-D10L  |
| 09-07-2117       | A-7675-A11L  | 09-06-2117       | A-7675-B11L  | 09-07-2118       | A-7675-C11L  | 09-06-2118       | A-7675-D11L  |
| 09-07-2127       | A-7675-A12L  | 09-06-2127       | A-7675-B12L  | 09-07-2128       | A-7675-C12L  | 09-06-2128       | A-7675-D12L  |
| 09-07-2137       | A-7675-A13L  | 09-06-2137       | A-7675-B13L  | 09-07-2138       | A-7675-C13L  | 09-06-2138       | A-7675-D13L  |
| 09-07-2147       | A-7675-A14L  | 09-06-2147       | A-7675-B14L  | 09-07-2148       | A-7675-C14L  | 09-06-2148       | A-7675-D14L  |
| 09-07-2157       | A-7675-A15L  | 09-06-2157       | A-7675-B15L  | 09-07-2158       | A-7675-C15L  | 09-06-2158       | A-7675-D15L  |
| 09-07-2167       | A-7675-A16L  | 09-06-2167       | A-7675-B16L  | 09-07-2168       | A-7675-C16L  | 09-06-2168       | A-7675-D16L  |
| 09-07-2177       | A-7675-A17L  | 09-06-2177       | A-7675-B17L  | 09-07-2178       | A-7675-C17L  | 09-06-2178       | A-7675-D17L  |
| 09-07-2187       | A-7675-A18L  | 09-06-2187       | A-7675-B18L  | 09-07-2188       | A-7675-C18L  | 09-06-2188       | A-7675-D18L  |
| 09-07-2197       | A-7675-A19L  | 09-06-2197       | A-7675-B19L  | 09-07-2198       | A-7675-C19L  | 09-06-2198       | A-7675-D19L  |
| 09-07-2207       | A-7675-A20L  | 09-06-2207       | A-7675-B20L  | 09-07-2208       | A-7675-C20L  | 09-06-2208       | A-7675-D20L  |
| 09-07-2217       | A-7675-A21L  | 09-06-2217       | A-7675-B21L  | 09-07-2218       | A-7675-C21L  | 09-06-2218       | A-7675-D21L  |
| 09-07-2227       | A-7675-A22L  | 09-06-2227       | A-7675-B22L  | 09-07-2228       | A-7675-C22L  | 09-06-2228       | A-7675-D22L  |
| 09-07-2237       | A-7675-A23L  | 09-06-2237       | A-7675-B23L  | 09-07-2238       | A-7675-C23L  | 09-06-2238       | A-7675-D23L  |
| 09-07-2247       | A-7675-A24L  | 09-06-2247       | A-7675-B24L  | 09-07-2248       | A-7675-C24L  | 09-06-2248       | A-7675-D24L  |

|                                          |                                                                                |                                                                                           |                               |
|------------------------------------------|--------------------------------------------------------------------------------|-------------------------------------------------------------------------------------------|-------------------------------|
| REVISION:<br><b>AZ3</b>                  | ECR/ECN INFORMATION:<br>EC No.: <b>UCP2010-0214</b><br>DATE: <b>12/17/2009</b> | TITLE:<br><b>CONNECTOR ASSEMBLY<br/>KK (3.96)/.156 CENTER<br/>INSULATION DISPLACEMENT</b> | SHEET No.<br><b>14</b>        |
| DOCUMENT NUMBER:<br><b>SDA-7675-****</b> | CREATED / REVISED BY:<br><b>MKIPPER</b>                                        | CHECKED BY:<br><b>SSOUSEK</b>                                                             | APPROVED BY:<br><b>FSMITH</b> |



| A-7675-ANLA                              |                                                                  | A-7675-BNLA                             |              | A-7675-CNLA                                                                     |              | A-7675-DNLA                   |                        |
|------------------------------------------|------------------------------------------------------------------|-----------------------------------------|--------------|---------------------------------------------------------------------------------|--------------|-------------------------------|------------------------|
| HOUSING                                  | 7674-AN                                                          | HOUSING                                 | 7674-BN      | HOUSING                                                                         | 7674-CN      | HOUSING                       | 7674-DN                |
| TERM. NO                                 | 40591-L(502)                                                     | TERM. NO                                | 40591-L(502) | TERM. NO                                                                        | 40591-L(502) | TERM. NO                      | 40591-L(502)           |
| BACKWALL:                                | NO                                                               | BACKWALL:                               | NO           | BACKWALL:                                                                       | YES          | BACKWALL:                     | YES                    |
| RAMP                                     | NO                                                               | RAMP                                    | YES          | RAMP                                                                            | NO           | RAMP                          | YES                    |
| MOLD VOID IN CKT                         | NONE                                                             | MOLD VOID IN CKT                        | NONE         | MOLD VOID IN CKT                                                                | NONE         | MOLD VOID IN CKT              | NONE                   |
| VOID TERM.IN CKT                         | NONE                                                             | VOID TERM.IN CKT                        | NONE         | VOID TERM.IN CKT                                                                | NONE         | VOID TERM.IN CKT              | NONE                   |
| MATL NO                                  | ENG NO:                                                          | MATL NO                                 | ENG NO:      | MATL NO                                                                         | ENG NO:      | MATL NO                       | ENG NO:                |
|                                          | A-7675-A02LA                                                     |                                         | A-7675-B02LA |                                                                                 | A-7675-C02LA | 26-31-2028                    | A-7675-D02LA           |
|                                          | A-7675-A03LA                                                     |                                         | A-7675-B03LA |                                                                                 | A-7675-C03LA |                               | A-7675-D03LA           |
|                                          | A-7675-A04LA                                                     |                                         | A-7675-B04LA |                                                                                 | A-7675-C04LA |                               | A-7675-D04LA           |
|                                          | A-7675-A05LA                                                     |                                         | A-7675-B05LA |                                                                                 | A-7675-C05LA |                               | A-7675-D05LA           |
|                                          | A-7675-A06LA                                                     |                                         | A-7675-B06LA |                                                                                 | A-7675-C06LA |                               | A-7675-D06LA           |
|                                          | A-7675-A07LA                                                     |                                         | A-7675-B07LA |                                                                                 | A-7675-C07LA |                               | A-7675-D07LA           |
|                                          | A-7675-A08LA                                                     |                                         | A-7675-B08LA |                                                                                 | A-7675-C08LA |                               | A-7675-D08LA           |
|                                          | A-7675-A09LA                                                     |                                         | A-7675-B09LA |                                                                                 | A-7675-C09LA |                               | A-7675-D09LA           |
|                                          | A-7675-A10LA                                                     |                                         | A-7675-B10LA |                                                                                 | A-7675-C10LA |                               | A-7675-D10LA           |
|                                          | A-7675-A11LA                                                     |                                         | A-7675-B11LA |                                                                                 | A-7675-C11LA |                               | A-7675-D11LA           |
|                                          | A-7675-A12LA                                                     |                                         | A-7675-B12LA |                                                                                 | A-7675-C12LA |                               | A-7675-D12LA           |
|                                          | A-7675-A13LA                                                     |                                         | A-7675-B13LA |                                                                                 | A-7675-C13LA |                               | A-7675-D13LA           |
|                                          | A-7675-A14LA                                                     |                                         | A-7675-B14LA |                                                                                 | A-7675-C14LA | 26-31-2148                    | A-7675-D14LA           |
|                                          | A-7675-A15LA                                                     |                                         | A-7675-B15LA |                                                                                 | A-7675-C15LA |                               | A-7675-D15LA           |
|                                          | A-7675-A16LA                                                     |                                         | A-7675-B16LA |                                                                                 | A-7675-C16LA |                               | A-7675-D16LA           |
|                                          | A-7675-A17LA                                                     |                                         | A-7675-B17LA |                                                                                 | A-7675-C17LA |                               | A-7675-D17LA           |
|                                          | A-7675-A18LA                                                     |                                         | A-7675-B18LA |                                                                                 | A-7675-C18LA |                               | A-7675-D18LA           |
|                                          | A-7675-A19LA                                                     |                                         | A-7675-B19LA |                                                                                 | A-7675-C19LA |                               | A-7675-D19LA           |
|                                          | A-7675-A20LA                                                     | 26-31-2207                              | A-7675-B20LA |                                                                                 | A-7675-C20LA |                               | A-7675-D20LA           |
|                                          | A-7675-A21LA                                                     |                                         | A-7675-B21LA |                                                                                 | A-7675-C21LA |                               | A-7675-D21LA           |
|                                          | A-7675-A22LA                                                     |                                         | A-7675-B22LA |                                                                                 | A-7675-C22LA |                               | A-7675-D22LA           |
|                                          | A-7675-A23LA                                                     |                                         | A-7675-B23LA |                                                                                 | A-7675-C23LA |                               | A-7675-D23LA           |
|                                          | A-7675-A24LA                                                     |                                         | A-7675-B24LA |                                                                                 | A-7675-C24LA |                               | A-7675-D24LA           |
| REVISION:<br><b>AZ3</b>                  | ECR/ECN INFORMATION:<br>EC No.: UCP2010-0214<br>DATE: 12/17/2009 |                                         | TITLE:       | <b>CONNECTOR ASSEMBLY<br/>KK (3.96)/.156 CENTER<br/>INSULATION DISPLACEMENT</b> |              |                               | SHEET No.<br><b>15</b> |
| DOCUMENT NUMBER:<br><b>SDA-7675-****</b> |                                                                  | CREATED / REVISED BY:<br><b>MKIPPER</b> |              | CHECKED BY:<br><b>SSOUSEK</b>                                                   |              | APPROVED BY:<br><b>FSMITH</b> |                        |

| A-7675-ANLD                              |                                                                  | A-7675-BNLD      |                                                                                           | A-7675-CNLD                   |              | A-7675-DNLD                   |                        |  |
|------------------------------------------|------------------------------------------------------------------|------------------|-------------------------------------------------------------------------------------------|-------------------------------|--------------|-------------------------------|------------------------|--|
| HOUSING                                  | 7674-AN                                                          | HOUSING          | 7674-BN                                                                                   | HOUSING                       | 7674-CN      | HOUSING                       | 7674-DN                |  |
| TERM. NO                                 | 40591-L(503)                                                     | TERM. NO         | 40591-L(503)                                                                              | TERM. NO                      | 40591-L(503) | TERM. NO                      | 40591-L(503)           |  |
| BACKWALL:                                | NO                                                               | BACKWALL:        | NO                                                                                        | BACKWALL:                     | YES          | BACKWALL:                     | YES                    |  |
| RAMP                                     | NO                                                               | RAMP             | YES                                                                                       | RAMP                          | NO           | RAMP                          | YES                    |  |
| MOLD VOID IN CKT                         | NONE                                                             | MOLD VOID IN CKT | NONE                                                                                      | MOLD VOID IN CKT              | NONE         | MOLD VOID IN CKT              | NONE                   |  |
| VOID TERM.IN CKT                         | NONE                                                             | VOID TERM.IN CKT | NONE                                                                                      | VOID TERM.IN CKT              | NONE         | VOID TERM.IN CKT              | NONE                   |  |
| MATL NO                                  | ENG NO:                                                          | MATL NO          | ENG NO:                                                                                   | MATL NO                       | ENG NO:      | MATL NO                       | ENG NO:                |  |
|                                          | A-7675-A02LD                                                     |                  | A-7675-B02LD                                                                              |                               | A-7675-C02LD |                               | A-7675-D02LD           |  |
|                                          | A-7675-A03LD                                                     |                  | A-7675-B03LD                                                                              |                               | A-7675-C03LD |                               | A-7675-D03LD           |  |
|                                          | A-7675-A04LD                                                     |                  | A-7675-B04LD                                                                              |                               | A-7675-C04LD |                               | A-7675-D04LD           |  |
|                                          | A-7675-A05LD                                                     |                  | A-7675-B05LD                                                                              |                               | A-7675-C05LD | 09-06-7055                    | A-7675-D05LD           |  |
|                                          | A-7675-A06LD                                                     |                  | A-7675-B06LD                                                                              |                               | A-7675-C06LD |                               | A-7675-D06LD           |  |
|                                          | A-7675-A07LD                                                     |                  | A-7675-B07LD                                                                              |                               | A-7675-C07LD |                               | A-7675-D07LD           |  |
|                                          | A-7675-A08LD                                                     |                  | A-7675-B08LD                                                                              |                               | A-7675-C08LD |                               | A-7675-D08LD           |  |
|                                          | A-7675-A09LD                                                     |                  | A-7675-B09LD                                                                              |                               | A-7675-C09LD |                               | A-7675-D09LD           |  |
|                                          | A-7675-A10LD                                                     |                  | A-7675-B10LD                                                                              |                               | A-7675-C10LD |                               | A-7675-D10LD           |  |
|                                          | A-7675-A11LD                                                     |                  | A-7675-B11LD                                                                              |                               | A-7675-C11LD |                               | A-7675-D11LD           |  |
|                                          | A-7675-A12LD                                                     |                  | A-7675-B12LD                                                                              |                               | A-7675-C12LD |                               | A-7675-D12LD           |  |
|                                          | A-7675-A13LD                                                     |                  | A-7675-B13LD                                                                              |                               | A-7675-C13LD |                               | A-7675-D13LD           |  |
|                                          | A-7675-A14LD                                                     |                  | A-7675-B14LD                                                                              |                               | A-7675-C14LD |                               | A-7675-D14LD           |  |
|                                          | A-7675-A15LD                                                     |                  | A-7675-B15LD                                                                              |                               | A-7675-C15LD |                               | A-7675-D15LD           |  |
|                                          | A-7675-A16LD                                                     |                  | A-7675-B16LD                                                                              |                               | A-7675-C16LD |                               | A-7675-D16LD           |  |
|                                          | A-7675-A17LD                                                     |                  | A-7675-B17LD                                                                              |                               | A-7675-C17LD |                               | A-7675-D17LD           |  |
|                                          | A-7675-A18LD                                                     |                  | A-7675-B18LD                                                                              |                               | A-7675-C18LD |                               | A-7675-D18LD           |  |
|                                          | A-7675-A19LD                                                     |                  | A-7675-B19LD                                                                              |                               | A-7675-C19LD |                               | A-7675-D19LD           |  |
|                                          | A-7675-A20LD                                                     |                  | A-7675-B20LD                                                                              |                               | A-7675-C20LD |                               | A-7675-D20LD           |  |
|                                          | A-7675-A21LD                                                     |                  | A-7675-B21LD                                                                              |                               | A-7675-C21LD |                               | A-7675-D21LD           |  |
|                                          | A-7675-A22LD                                                     |                  | A-7675-B22LD                                                                              |                               | A-7675-C22LD |                               | A-7675-D22LD           |  |
|                                          | A-7675-A23LD                                                     |                  | A-7675-B23LD                                                                              |                               | A-7675-C23LD |                               | A-7675-D23LD           |  |
|                                          | A-7675-A24LD                                                     |                  | A-7675-B24LD                                                                              |                               | A-7675-C24LD | 09-06-7245                    | A-7675-D24LD           |  |
| REVISION:<br><b>AZ3</b>                  | ECR/ECN INFORMATION:<br>EC No.: UCP2010-0214<br>DATE: 12/17/2009 |                  | TITLE:<br><b>CONNECTOR ASSEMBLY<br/>KK (3.96)/.156 CENTER<br/>INSULATION DISPLACEMENT</b> |                               |              |                               | SHEET No.<br><b>16</b> |  |
| DOCUMENT NUMBER:<br><b>SDA-7675-****</b> |                                                                  |                  | CREATED / REVISED BY:<br><b>MKIPPER</b>                                                   | CHECKED BY:<br><b>SSOUSEK</b> |              | APPROVED BY:<br><b>FSMITH</b> |                        |  |

| A-7675-ANM                               |                                                                                | A-7675-BNM       |                                                                                           | A-7675-CNM       |                               | A-7675-DNM       |                               |  |
|------------------------------------------|--------------------------------------------------------------------------------|------------------|-------------------------------------------------------------------------------------------|------------------|-------------------------------|------------------|-------------------------------|--|
| HOUSING                                  | 7674-AN                                                                        | HOUSING          | 7674-BN                                                                                   | HOUSING          | 7674-CN                       | HOUSING          | 7674-DN                       |  |
| TERM. NO                                 | 40591-M(102)                                                                   | TERM. NO         | 40591-M(102)                                                                              | TERM. NO         | 40591-M(102)                  | TERM. NO         | 40591-M(102)                  |  |
| BACKWALL:                                | NO                                                                             | BACKWALL:        | NO                                                                                        | BACKWALL:        | YES                           | BACKWALL:        | YES                           |  |
| RAMP                                     | NO                                                                             | RAMP             | YES                                                                                       | RAMP             | NO                            | RAMP             | YES                           |  |
| MOLD VOID IN CKT                         | NONE                                                                           | MOLD VOID IN CKT | NONE                                                                                      | MOLD VOID IN CKT | NONE                          | MOLD VOID IN CKT | NONE                          |  |
| VOID TERM.IN CKT                         | NONE                                                                           | VOID TERM.IN CKT | NONE                                                                                      | VOID TERM.IN CKT | NONE                          | VOID TERM.IN CKT | NONE                          |  |
| MATL NO                                  | ENG NO:                                                                        | MATL NO          | ENG NO:                                                                                   | MATL NO          | ENG NO:                       | MATL NO          | ENG NO:                       |  |
| 09-07-1027                               | A-7675-A02M                                                                    | 09-06-1027       | A-7675-B02M                                                                               | 09-07-1028       | A-7675-C02M                   | 09-06-1028       | A-7675-D02M                   |  |
| 09-07-1037                               | A-7675-A03M                                                                    | 09-06-1037       | A-7675-B03M                                                                               | 09-07-1038       | A-7675-C03M                   | 09-06-1038       | A-7675-D03M                   |  |
| 09-07-1047                               | A-7675-A04M                                                                    | 09-06-1047       | A-7675-B04M                                                                               | 09-07-1048       | A-7675-C04M                   | 09-06-1048       | A-7675-D04M                   |  |
| 09-07-1057                               | A-7675-A05M                                                                    | 09-06-1057       | A-7675-B05M                                                                               | 09-07-1058       | A-7675-C05M                   | 09-06-1058       | A-7675-D05M                   |  |
| 09-07-1067                               | A-7675-A06M                                                                    | 09-06-1067       | A-7675-B06M                                                                               | 09-07-1068       | A-7675-C06M                   | 09-06-1068       | A-7675-D06M                   |  |
| 09-07-1077                               | A-7675-A07M                                                                    | 09-06-1077       | A-7675-B07M                                                                               | 09-07-1078       | A-7675-C07M                   | 09-06-1078       | A-7675-D07M                   |  |
| 09-07-1087                               | A-7675-A08M                                                                    | 09-06-1087       | A-7675-B08M                                                                               | 09-07-1088       | A-7675-C08M                   | 09-06-1088       | A-7675-D08M                   |  |
| 09-07-1097                               | A-7675-A09M                                                                    | 09-06-1097       | A-7675-B09M                                                                               | 09-07-1098       | A-7675-C09M                   | 09-06-1098       | A-7675-D09M                   |  |
| 09-07-1107                               | A-7675-A10M                                                                    | 09-06-1107       | A-7675-B10M                                                                               | 09-07-1108       | A-7675-C10M                   | 09-06-1108       | A-7675-D10M                   |  |
| 09-07-1117                               | A-7675-A11M                                                                    | 09-06-1117       | A-7675-B11M                                                                               | 09-07-1118       | A-7675-C11M                   | 09-06-1118       | A-7675-D11M                   |  |
| 09-07-1127                               | A-7675-A12M                                                                    | 09-06-1127       | A-7675-B12M                                                                               | 09-07-1128       | A-7675-C12M                   | 09-06-1128       | A-7675-D12M                   |  |
| 09-07-1137                               | A-7675-A13M                                                                    | 09-06-1137       | A-7675-B13M                                                                               | 09-07-1138       | A-7675-C13M                   | 09-06-1138       | A-7675-D13M                   |  |
| 09-07-1147                               | A-7675-A14M                                                                    | 09-06-1147       | A-7675-B14M                                                                               | 09-07-1148       | A-7675-C14M                   | 09-06-1148       | A-7675-D14M                   |  |
| 09-07-1157                               | A-7675-A15M                                                                    | 09-06-1157       | A-7675-B15M                                                                               | 09-07-1158       | A-7675-C15M                   | 09-06-1158       | A-7675-D15M                   |  |
| 09-07-1167                               | A-7675-A16M                                                                    | 09-06-1167       | A-7675-B16M                                                                               | 09-07-1168       | A-7675-C16M                   | 09-06-1168       | A-7675-D16M                   |  |
| 09-07-1177                               | A-7675-A17M                                                                    | 09-06-1177       | A-7675-B17M                                                                               | 09-07-1178       | A-7675-C17M                   | 09-06-1178       | A-7675-D17M                   |  |
| 09-07-1187                               | A-7675-A18M                                                                    | 09-06-1187       | A-7675-B18M                                                                               | 09-07-1188       | A-7675-C18M                   | 09-06-1188       | A-7675-D18M                   |  |
| 09-07-1197                               | A-7675-A19M                                                                    | 09-06-1197       | A-7675-B19M                                                                               | 09-07-1198       | A-7675-C19M                   | 09-06-1198       | A-7675-D19M                   |  |
| 09-07-1207                               | A-7675-A20M                                                                    | 09-06-1207       | A-7675-B20M                                                                               | 09-07-1208       | A-7675-C20M                   | 09-06-1208       | A-7675-D20M                   |  |
| 09-07-1217                               | A-7675-A21M                                                                    | 09-06-1217       | A-7675-B21M                                                                               | 09-07-1218       | A-7675-C21M                   | 09-06-1218       | A-7675-D21M                   |  |
| 09-07-1227                               | A-7675-A22M                                                                    | 09-06-1227       | A-7675-B22M                                                                               | 09-07-1228       | A-7675-C22M                   | 09-06-1228       | A-7675-D22M                   |  |
| 09-07-1237                               | A-7675-A23M                                                                    | 09-06-1237       | A-7675-B23M                                                                               | 09-07-1238       | A-7675-C23M                   | 09-06-1238       | A-7675-D23M                   |  |
| 09-07-1247                               | A-7675-A24M                                                                    | 09-06-1247       | A-7675-B24M                                                                               | 09-07-1248       | A-7675-C24M                   | 09-06-1248       | A-7675-D24M                   |  |
| REVISION:<br><b>AZ3</b>                  | ECR/ECN INFORMATION:<br>EC No.: <b>UCP2010-0214</b><br>DATE: <b>12/17/2009</b> |                  | TITLE:<br><b>CONNECTOR ASSEMBLY<br/>KK (3.96)/.156 CENTER<br/>INSULATION DISPLACEMENT</b> |                  |                               |                  | SHEET No.<br><b>17</b>        |  |
| DOCUMENT NUMBER:<br><b>SDA-7675-****</b> |                                                                                |                  | CREATED / REVISED BY:<br><b>MKIPPER</b>                                                   |                  | CHECKED BY:<br><b>SSOUSEK</b> |                  | APPROVED BY:<br><b>FSMITH</b> |  |

| A-7675-ANMA      |              | A-7675-BNMA      |              | A-7675-CNMA      |              | A-7675-DNMA      |              |
|------------------|--------------|------------------|--------------|------------------|--------------|------------------|--------------|
| HOUSING          | 7674-AN      | HOUSING          | 7674-BN      | HOUSING          | 7674-CN      | HOUSING          | 7674-DN      |
| TERM. NO         | 40591-M(502) | TERM. NO         | 40591-M(502) | TERM. NO         | 40591-M(502) | TERM. NO         | 40591-M(502) |
| BACKWALL:        | NO           | BACKWALL:        | NO           | BACKWALL:        | YES          | BACKWALL:        | YES          |
| RAMP             | NO           | RAMP             | YES          | RAMP             | NO           | RAMP             | YES          |
| MOLD VOID IN CKT | NONE         | MOLD VOID IN CKT | NONE         | MOLD VOID IN CKT | NONE         | MOLD VOID IN CKT | NONE         |
| VOID TERM.IN CKT | NONE         | VOID TERM.IN CKT | NONE         | VOID TERM.IN CKT | NONE         | VOID TERM.IN CKT | NONE         |
| MATL NO          | ENG NO:      | MATL NO          | ENG NO:      | MATL NO          | ENG NO:      | MATL NO          | ENG NO:      |
|                  | A-7675-A02MA |                  | A-7675-B02MA |                  | A-7675-C02MA |                  | A-7675-D02MA |
|                  | A-7675-A03MA |                  | A-7675-B03MA |                  | A-7675-C03MA |                  | A-7675-D03MA |
|                  | A-7675-A04MA |                  | A-7675-B04MA |                  | A-7675-C04MA |                  | A-7675-D04MA |
|                  | A-7675-A05MA |                  | A-7675-B05MA |                  | A-7675-C05MA |                  | A-7675-D05MA |
|                  | A-7675-A06MA |                  | A-7675-B06MA |                  | A-7675-C06MA |                  | A-7675-D06MA |
|                  | A-7675-A07MA |                  | A-7675-B07MA |                  | A-7675-C07MA | 26-32-1074       | A-7675-D07MA |
|                  | A-7675-A08MA |                  | A-7675-B08MA |                  | A-7675-C08MA | 26-32-1084       | A-7675-D08MA |
|                  | A-7675-A09MA |                  | A-7675-B09MA | 09-07-7091       | A-7675-C09MA |                  | A-7675-D09MA |
|                  | A-7675-A10MA |                  | A-7675-B10MA | 26-32-1102       | A-7675-C10MA | 26-32-1104       | A-7675-D10MA |
|                  | A-7675-A11MA |                  | A-7675-B11MA |                  | A-7675-C11MA |                  | A-7675-D11MA |
|                  | A-7675-A12MA |                  | A-7675-B12MA |                  | A-7675-C12MA | 26-32-1124       | A-7675-D12MA |
|                  | A-7675-A13MA |                  | A-7675-B13MA |                  | A-7675-C13MA |                  | A-7675-D13MA |
| 26-32-1141       | A-7675-A14MA | 26-32-1143       | A-7675-B14MA |                  | A-7675-C14MA |                  | A-7675-D14MA |
|                  | A-7675-A15MA | 26-32-1153       | A-7675-B15MA |                  | A-7675-C15MA |                  | A-7675-D15MA |
|                  | A-7675-A16MA |                  | A-7675-B16MA | 26-32-1162       | A-7675-C16MA |                  | A-7675-D16MA |
|                  | A-7675-A17MA |                  | A-7675-B17MA |                  | A-7675-C17MA |                  | A-7675-D17MA |
| 26-32-1181       | A-7675-A18MA |                  | A-7675-B18MA | 26-32-1182       | A-7675-C18MA |                  | A-7675-D18MA |
|                  | A-7675-A19MA |                  | A-7675-B19MA |                  | A-7675-C19MA |                  | A-7675-D19MA |
| 26-32-1201       | A-7675-A20MA | 26-32-1203       | A-7675-B20MA |                  | A-7675-C20MA |                  | A-7675-D20MA |
|                  | A-7675-A21MA |                  | A-7675-B21MA |                  | A-7675-C21MA |                  | A-7675-D21MA |
|                  | A-7675-A22MA |                  | A-7675-B22MA |                  | A-7675-C22MA |                  | A-7675-D22MA |
|                  | A-7675-A23MA |                  | A-7675-B23MA |                  | A-7675-C23MA |                  | A-7675-D23MA |
|                  | A-7675-A24MA |                  | A-7675-B24MA |                  | A-7675-C24MA |                  | A-7675-D24MA |

|                                          |                                                                                |                                                                                           |                               |
|------------------------------------------|--------------------------------------------------------------------------------|-------------------------------------------------------------------------------------------|-------------------------------|
| REVISION:<br><b>AZ3</b>                  | ECR/ECN INFORMATION:<br>EC No.: <b>UCP2010-0214</b><br>DATE: <b>12/17/2009</b> | TITLE:<br><b>CONNECTOR ASSEMBLY<br/>KK (3.96)/.156 CENTER<br/>INSULATION DISPLACEMENT</b> | SHEET No.<br><b>18</b>        |
| DOCUMENT NUMBER:<br><b>SDA-7675-****</b> | CREATED / REVISED BY:<br><b>MKIPPER</b>                                        | CHECKED BY:<br><b>SSOUSEK</b>                                                             | APPROVED BY:<br><b>FSMITH</b> |

| A-7675-ANMH                              |                                                                  | A-7675-BNMH                   |                                                                                 | A-7675-CNMH      |              | A-7675-DNMH      |                        |
|------------------------------------------|------------------------------------------------------------------|-------------------------------|---------------------------------------------------------------------------------|------------------|--------------|------------------|------------------------|
| HOUSING                                  | 7674-AN                                                          | HOUSING                       | 7674-BN                                                                         | HOUSING          | 7674-CN      | HOUSING          | 7674-DN                |
| TERM. NO                                 | 40591-M(555)                                                     | TERM. NO                      | 40591-M(555)                                                                    | TERM. NO         | 40591-M(555) | TERM. NO         | 40591-M(555)           |
| BACKWALL:                                | NO                                                               | BACKWALL:                     | NO                                                                              | BACKWALL:        | YES          | BACKWALL:        | YES                    |
| RAMP                                     | NO                                                               | RAMP                          | YES                                                                             | RAMP             | NO           | RAMP             | YES                    |
| MOLD VOID IN CKT                         | NONE                                                             | MOLD VOID IN CKT              | NONE                                                                            | MOLD VOID IN CKT | NONE         | MOLD VOID IN CKT | NONE                   |
| VOID TERM.IN CKT                         | NONE                                                             | VOID TERM.IN CKT              | NONE                                                                            | VOID TERM.IN CKT | NONE         | VOID TERM.IN CKT | NONE                   |
| MATL NO                                  | ENG NO:                                                          | MATL NO                       | ENG NO:                                                                         | MATL NO          | ENG NO:      | MATL NO          | ENG NO:                |
|                                          | A-7675-A02MH                                                     |                               | A-7675-B02MH                                                                    |                  | A-7675-C02MH | 26-32-7024       | A-7675-D02MH           |
|                                          | A-7675-A03MH                                                     | 26-32-7032                    | A-7675-B03MH                                                                    |                  | A-7675-C03MH | 26-32-7034       | A-7675-D03MH           |
|                                          | A-7675-A04MH                                                     |                               | A-7675-B04MH                                                                    |                  | A-7675-C04MH | 26-32-7044       | A-7675-D04MH           |
|                                          | A-7675-A05MH                                                     |                               | A-7675-B05MH                                                                    |                  | A-7675-C05MH | 26-32-7054       | A-7675-D05MH           |
|                                          | A-7675-A06MH                                                     | 26-32-7062                    | A-7675-B06MH                                                                    | 26-32-7063       | A-7675-C06MH | 26-32-7064       | A-7675-D06MH           |
|                                          | A-7675-A07MH                                                     |                               | A-7675-B07MH                                                                    |                  | A-7675-C07MH | 26-32-7074       | A-7675-D07MH           |
|                                          | A-7675-A08MH                                                     | 26-32-7082                    | A-7675-B08MH                                                                    |                  | A-7675-C08MH | 26-32-7084       | A-7675-D08MH           |
|                                          | A-7675-A09MH                                                     |                               | A-7675-B09MH                                                                    |                  | A-7675-C09MH | 26-32-7094       | A-7675-D09MH           |
|                                          | A-7675-A10MH                                                     |                               | A-7675-B10MH                                                                    |                  | A-7675-C10MH | 26-32-7104       | A-7675-D10MH           |
|                                          | A-7675-A11MH                                                     |                               | A-7675-B11MH                                                                    |                  | A-7675-C11MH | 26-32-7114       | A-7675-D11MH           |
|                                          | A-7675-A12MH                                                     |                               | A-7675-B12MH                                                                    |                  | A-7675-C12MH | 26-32-7124       | A-7675-D12MH           |
|                                          | A-7675-A13MH                                                     |                               | A-7675-B13MH                                                                    |                  | A-7675-C13MH | 26-32-7134       | A-7675-D13MH           |
|                                          | A-7675-A14MH                                                     |                               | A-7675-B14MH                                                                    |                  | A-7675-C14MH | 26-32-7144       | A-7675-D14MH           |
|                                          | A-7675-A15MH                                                     |                               | A-7675-B15MH                                                                    |                  | A-7675-C15MH | 26-32-7154       | A-7675-D15MH           |
|                                          | A-7675-A16MH                                                     |                               | A-7675-B16MH                                                                    |                  | A-7675-C16MH | 26-32-7164       | A-7675-D16MH           |
|                                          | A-7675-A17MH                                                     |                               | A-7675-B17MH                                                                    |                  | A-7675-C17MH | 26-32-7174       | A-7675-D17MH           |
|                                          | A-7675-A18MH                                                     |                               | A-7675-B18MH                                                                    |                  | A-7675-C18MH | 26-32-7184       | A-7675-D18MH           |
|                                          | A-7675-A19MH                                                     |                               | A-7675-B19MH                                                                    |                  | A-7675-C19MH | 26-32-7194       | A-7675-D19MH           |
|                                          | A-7675-A20MH                                                     |                               | A-7675-B20MH                                                                    |                  | A-7675-C20MH | 26-32-7204       | A-7675-D20MH           |
|                                          | A-7675-A21MH                                                     |                               | A-7675-B21MH                                                                    |                  | A-7675-C21MH | 26-32-7214       | A-7675-D21MH           |
|                                          | A-7675-A22MH                                                     |                               | A-7675-B22MH                                                                    |                  | A-7675-C22MH | 26-32-7224       | A-7675-D22MH           |
|                                          | A-7675-A23MH                                                     |                               | A-7675-B23MH                                                                    |                  | A-7675-C23MH | 26-32-7234       | A-7675-D23MH           |
|                                          | A-7675-A24MH                                                     |                               | A-7675-B24MH                                                                    |                  | A-7675-C24MH | 26-32-7244       | A-7675-D24MH           |
| REVISION:<br><b>AZ3</b>                  | ECR/ECN INFORMATION:<br>EC No.: UCP2010-0214<br>DATE: 12/17/2009 | TITLE:                        | <b>CONNECTOR ASSEMBLY<br/>KK (3.96)/.156 CENTER<br/>INSULATION DISPLACEMENT</b> |                  |              |                  | SHEET No.<br><b>19</b> |
| DOCUMENT NUMBER:<br><b>SDA-7675-****</b> | CREATED / REVISED BY:<br><b>MKIPPER</b>                          | CHECKED BY:<br><b>SSOUSEK</b> | APPROVED BY:<br><b>FSMITH</b>                                                   |                  |              |                  |                        |











